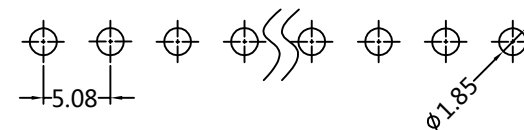


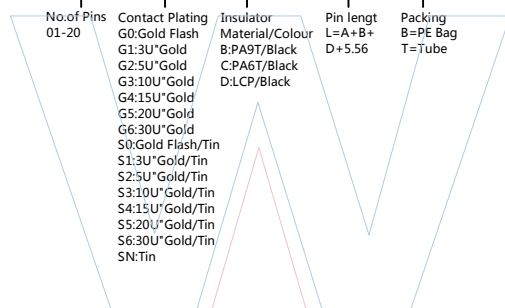


Recommended P.C.B Layout(Top Side)  
(PCB BOARD TOLERANCE±0.05)

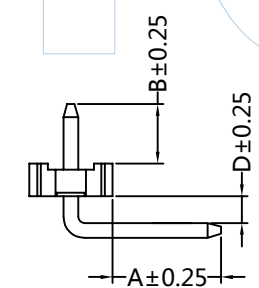
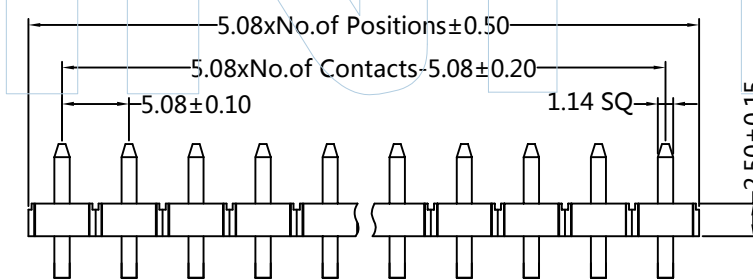
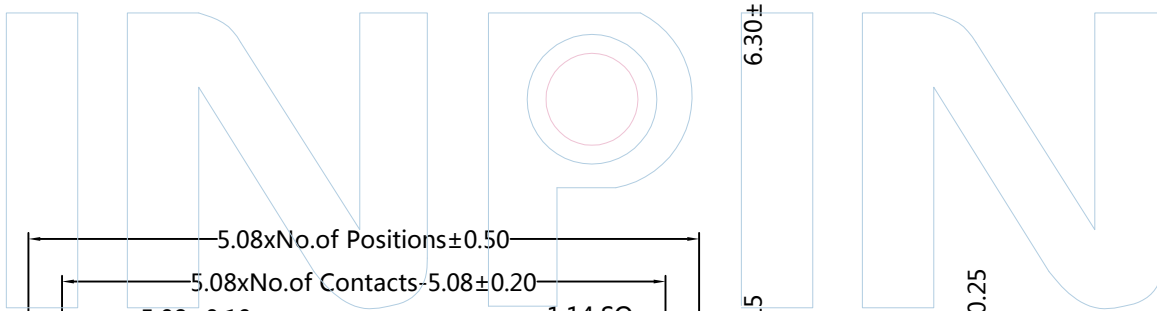
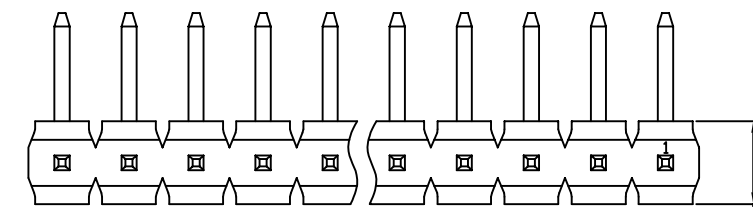


PART NUMBER CODING

PHJR25-11 XX XX X XXX X 1



Dimension antitheses list			
ITEM	A	B	D
Standard	3.50	6.00	0.00
Alternate			



Tel:+86 769 82581808 FAX:+86 769 81766192  
E-Mail:sales@winpin.net Http:www.winpin.net

PART NO: PHJR25-11XXXXXXXXX1

TITLE: PH 5.08mm Single ROW 90° H=2.5mm Plane Bending

NOTES:  
Current Rating:7.0AMP  
Withstand Voltage:500V AC/DC  
Contact Resistance:20mΩ Max  
Insulation Resistance:1000MΩ Min  
Operation Temperature:-40°C to +105°C

Contact Material: Brass  
Contact Plating:Au or Sn over Ni  
Insulator Material:PA9T/PA6T/LCP+30%GF (UL94V-0)

UNLESS OTHERWISE SPECIFIED DIMENSIONS ARE IN METRIC  
TOLERANCES ARE:  
DECIMALS Angle  
X.X:±0.40 ± 3°  
X.XX:±0.25  
X.XXX:±0.15

SCALE	1:1
UNIT	MM
PROJ.	
SHEET	

A0	2015/06/25	NEW	Huan.Tan		Huan.Tan
REV	DATE	MODIFICATION DESCRIPTIO	DRAW	CHANGE	APPROVE