



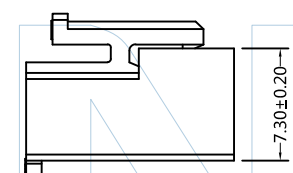
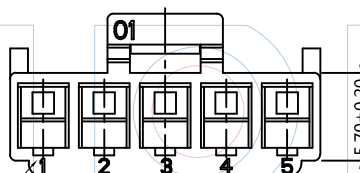
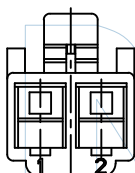
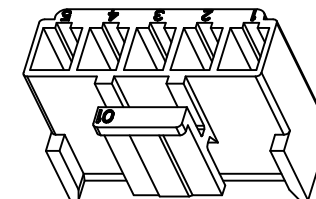
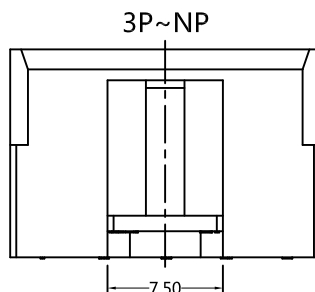
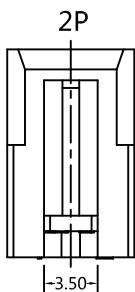
# PART NUMBER CODING

## H39603-1 XX X 1

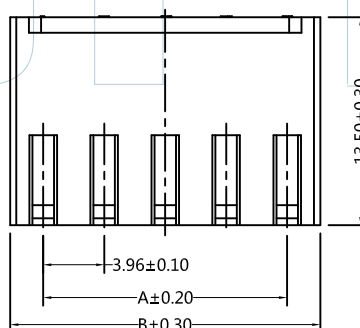
No. of pins  
02-15P

Color  
E=Beige  
W=White

Pins	Dimensions	
	A	B
02	3.96	8.25
03	7.92	12.21
04	11.88	16.17
05	15.84	20.13
06	19.80	24.09
07	23.76	28.05
08	27.72	32.01
09	31.68	35.97
10	35.64	39.93
11	39.60	43.89
12	43.56	47.85
13	47.52	51.81
14	51.48	55.77
15	55.44	59.73



Circuit 1



Tel: +86 769 82581808  
E-Mail: sales@winpin.net

FAX: +86 769 81766192  
Http: www.winpin.net

PART NO: H39603-1XXX1

TITLE: VH 3.96mm Housing

NOTES:  
Current Rating: 7.0A AC/DC  
Voltage Rating: 250V AC/DC  
Withstand Voltage: 1500V AC/DC  
Contact Resistance: 20mΩ Max  
Insulation Resistance: 1000MΩ Min  
Operation Temperature: -25°C ~ +85°C  
Applicable Terminal: T39603-PXX1  
Applicable Wafer: W39603-1XXXXXX1

MATERIAL:  
Insulator: PA66, UL94V-0

UNLESS OTHERWISE SPECIFIED DIMENSIONS ARE IN METRIC TOLERANCES ARE:  
DECIMALS Angle  
X.X: ±0.40 ± 3°  
X.XX: ±0.25  
X.XXX: ±0.15

SCALE 1:1

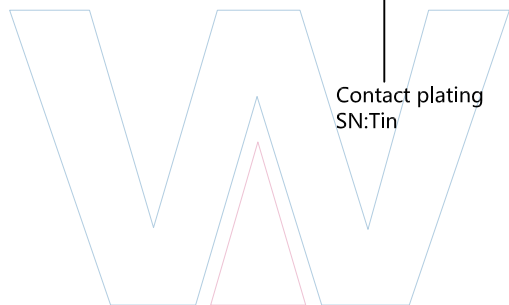
UNIT MM

PROJ.

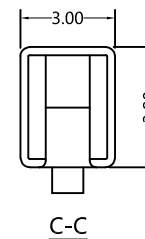
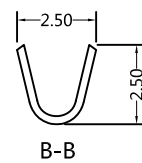
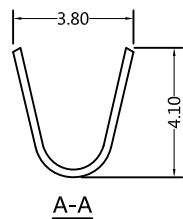
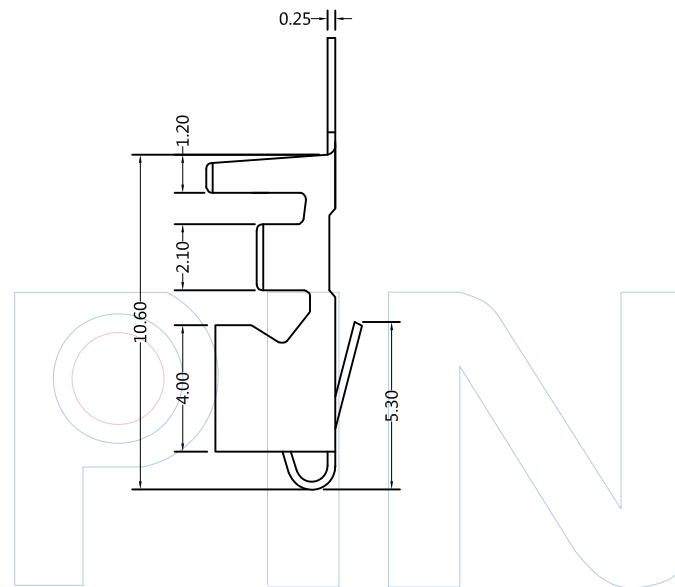
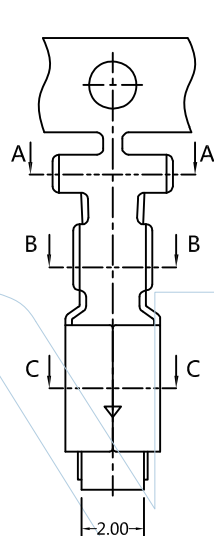
SHEET

A0	2015/06/25	NEW	GF.He	Andy	
REV	DATE	MODIFICATION DESCRIPTION	DRAW	CHANGE	APPROVE

PART NUMBER CODING  
T39603-P XX 1



Contact plating  
SN: Tin



Tel: +86 769 82581808      Fax: +86 769 81766192  
E-Mail: sales@winpin.net      Http: www.winpin.net

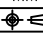
PART NO: T39603-PXX1

TITLE: VH 3.96mm Terminal

NOTES:  
Current Rating: 7.0A AC/DC  
Voltage Rating: 250V AC/DC  
Withstand Voltage: 1500V AC/DC  
Contact Resistance: 20mΩ Max  
Insulation Resistance: 1000MΩ Min  
Operation Temperature: -25°C ~ +85°C  
Applicable Wire: AWG#18-#22  
Applicable Terminal: T39603-PXX1  
Applicable Wafer: W39603-1XXXXXX1

MATERIAL:  
Contact: Phosphor Bronze  
Contact Plating: Sn over Ni

UNLESS OTHERWISE SPECIFIED DIMENSIONS ARE IN METRIC  
TOLERANCES ARE:  
DECIMALS    Angle  
X.X: ±0.40    ± 3°  
X.XX: ±0.25  
X.XXX: ±0.15

SCALE	1:1
UNIT	MM
PROJ.	
SHEET	

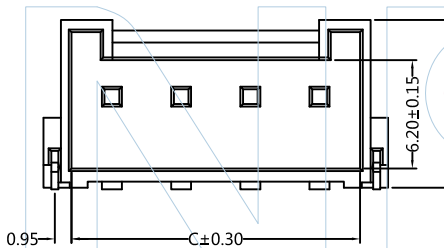
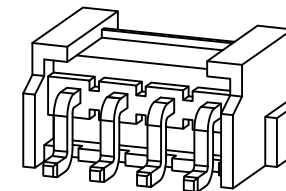
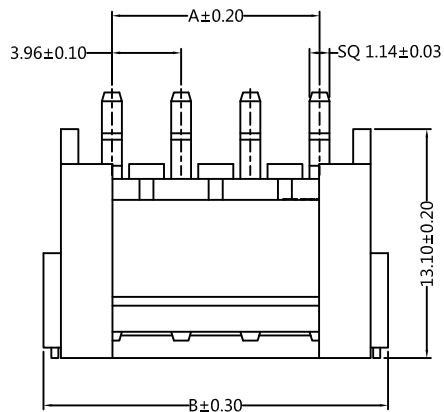
A0	2015/06/25	NEW	Hua.ZT		Hua.ZT
REV	DATE	MODIFICATION DESCRIPTIO	DRAW	CHANGE	APPROVE



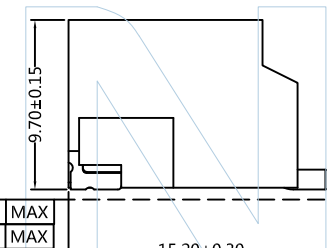
### PART NUMBER CODING

W39603-1 XX Z XX X X 1

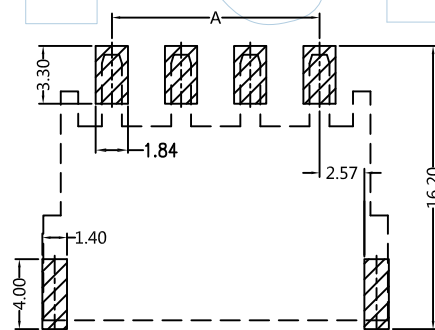
No. of pins: 02-08P  
 Contact plating: SN: Tin  
 Color: E=Beige  
 Packing: R: Reel



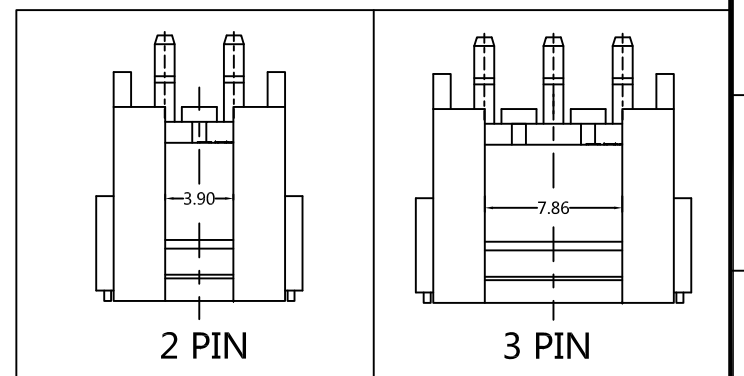
D	02P~08P	0.10	MAX
	09P~16P	0.12	MAX



Pins	Dimensions		
	A	B	C
02	3.96	11.88	8.60
03	7.92	15.84	12.56
04	11.88	19.80	16.52
05	15.84	23.76	20.48
06	19.80	27.72	24.44
07	23.76	31.68	28.40
08	27.72	35.64	32.36



Recommended P.C.B Layout (Top Side)  
 (PCB BOARD TOLERANCE ±0.05)



Tel: +86 769 82581808 FAX: +86 769 81766192  
 E-Mail: sales@winpin.net Http: www.winpin.net

PART NO: W39603-1XXZXXXX1

TITLE: VH3.96mm Wafer 90° SMT

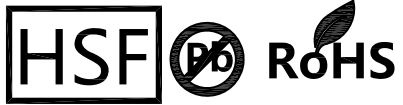
NOTES:  
 Current Rating: 7.0A AC/DC  
 Voltage Rating: 250V AC/DC  
 Withstand Voltage: 1000V AC/DC  
 Contact Resistance: 20mΩ Max  
 Insulation Resistance: 1500MΩ Min  
 Operation Temperature: -25°C ~ +105°C  
 Applicable Terminal: T39603-PXX1  
 Applicable Housing: H39603-1XXX1

MATERIAL:  
 Contact: Brass  
 Contact Plating: Sn over Ni  
 Solde tabs: Brass  
 Solde tabs Plating: Sn over Ni  
 Insulator: PA9T, UL94V-0

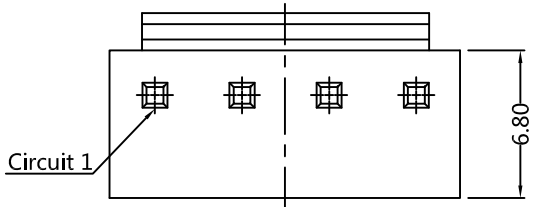
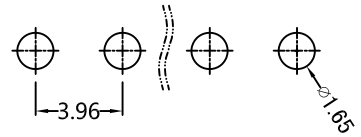
UNLESS OTHERWISE SPECIFIED DIMENSIONS ARE IN METRIC  
 TOLERANCES ARE:  
 DECIMALS Angle  
 X.X: ±0.40 ± 3°  
 X.XX: ±0.25  
 X.XXX: ±0.15

SCALE	1:1
UNIT	MM
PROJ.	
SHEET	

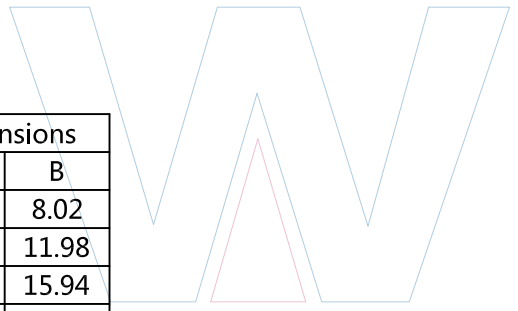
A0	2020/05/12	NEW	Jason.Huang	Jason.Huang	
REV	DATE	MODIFICATION DESCRIPTIO	DRAW	CHANGE	APPROVE



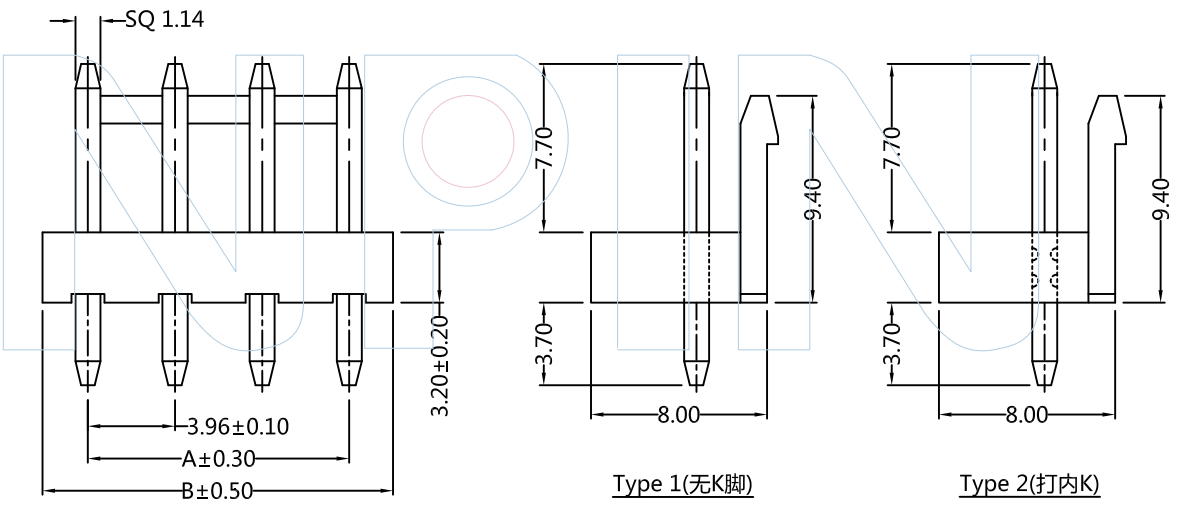
Recommended P.C.B Layout(Top Side)  
(PCB BOARD TOLERANCE±0.05)



**PART NUMBER CODING**  
W39603-1 XX S XX X X X  
No.of pins: 02-12P  
Contact plating: SN:Tin  
Color: W=White  
Packing: B=PE Bag  
Series No.: 1=Type 1, 2=Type 2



Pins	Dimensions	
	A	B
02	3.96	8.02
03	7.92	11.98
04	11.88	15.94
05	15.84	19.90
06	19.80	23.86
07	23.76	27.82
08	27.72	31.78
09	31.68	35.74
10	35.64	39.70
11	39.60	43.66
12	43.56	47.62



**WINPIN**  
Tel:+86 769 82581808 FAX:+86 769 81766192  
E-Mail:sales@winpin.net Http://www.winpin.net

PART NO: W39603-1XXSXXXX  
TITLE: VH3.96mm Wafer XXP 有靠背180° PA66

**NOTES:**  
Current Rating:7.0AMP  
Voltage Rating:250V AC/DC  
Withstand Voltage:1500V AC/DC  
Contact Resistance:10mΩ Max  
Insulation Resistance:1000MΩ Min  
Operation Temperature:-25°C to +85°C  
Applicable Terminal:T39603-PXX1  
Applicable Housing:H39603-1XXX1

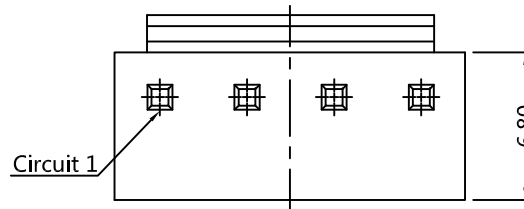
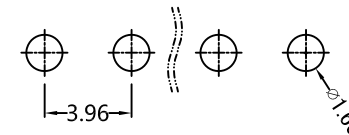
**MATERIAL:**  
Contact:Brass  
Contact Plating:Sn over Ni  
Insulator:PA66, UL94-V0

UNLESS OTHERWISE SPECIFIED DIMENSIONS ARE IN METRIC  
TOLERANCES ARE:  
DECIMALS Angle  
X.X:±0.40 ± 3°  
X.XX:±0.25  
X.XXX:±0.15  
SCALE 1:1  
UNIT MM  
PROJ.  
SHEET

A0	2020/06/25	NEW	Jason.Huang		Jason.Huang
REV	DATE	MODIFICATION DESCRIPTIO	DRAW	CHECKED	APPROVE

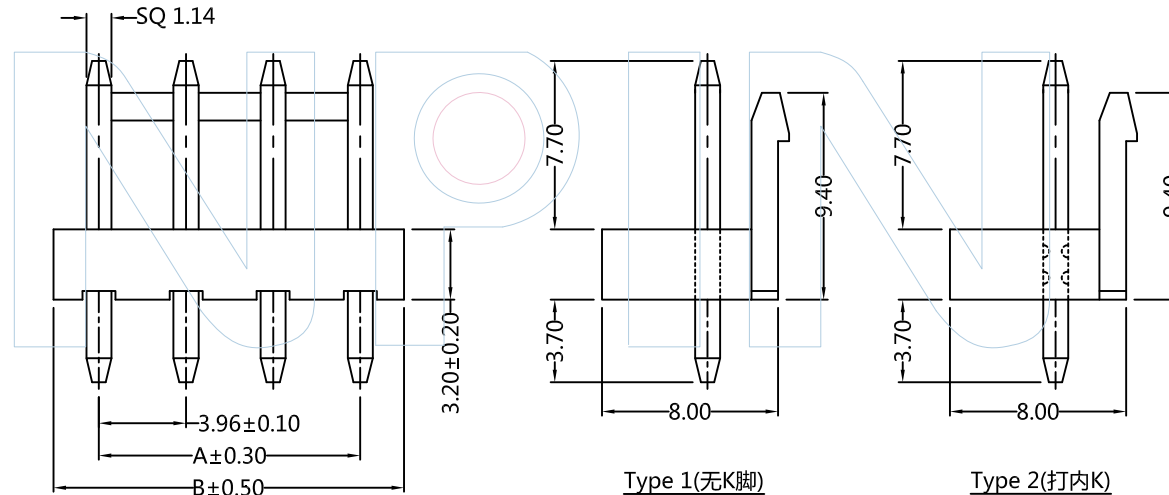


Recommended P.C.B Layout(Top Side)  
(PCB BOARD TOLERANCE±0.05)



**PART NUMBER CODING**  
**W39603-1 XX S XX X X X**  
 No.of pins: 02-12P  
 Contact plating: SN:Tin  
 Color: W=White  
 Packing: B=PE Bag  
 Series No. 1=Type 1 2=Type 2

Pins	Dimensions	
	A	B
02	3.96	8.02
03	7.92	11.98
04	11.88	15.94
05	15.84	19.90
06	19.80	23.86
07	23.76	27.82
08	27.72	31.78
09	31.68	35.74
10	35.64	39.70
11	39.60	43.66
12	43.56	47.62



Type 1(无K脚)

Type 2(打内K)



Tel:+86 769 82581808 FAX:+86 769 81766192  
 E-Mail:sales@winpin.net Http://www.winpin.net

PART NO: W39603-1XXSXXXX

TITLE: VH3.96mm Wafer XXP 有靠背180° PA66

**NOTES:**  
 Current Rating:7.0AMP  
 Voltage Rating:250V AC/DC  
 Withstand Voltage:1500V AC/DC  
 Contact Resistance:10mΩ Max  
 Insulation Resistance:1000MΩ Min  
 Operation Temperature:-25°C to +85°C  
 Applicable Terminal:T39603-PXX1  
 Applicable Housing:H39603-1XXX1

**MATERIAL:**  
 Contact:Brass  
 Contact Plating:Sn over Ni  
 Insulator:PA66, UL94-V0

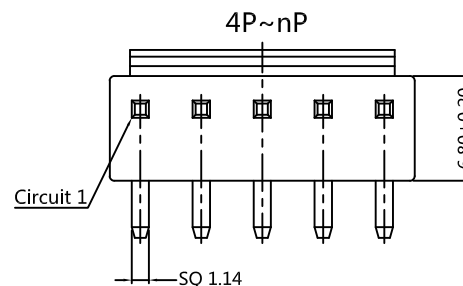
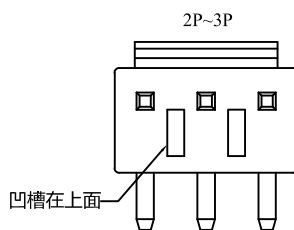
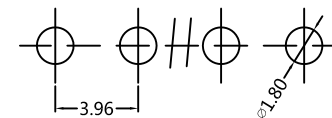
UNLESS OTHERWISE SPECIFIED DIMENSIONS ARE IN METRIC TOLERANCES ARE:  
 DECIMALS Angle ± 3°  
 X.X:±0.40  
 X.XX:±0.25  
 X.XXX:±0.15

SCALE	1:1
UNIT	MM
PROJ.	
SHEET	

NO.	DATE	DESCRIPTION	DRAWN	CHECKED	APPROVED
A0	2020/06/25	NEW	Jason.Huang		Jason.Huang
REV	DATE	MODIFICATION DESCRIPTION	DRAW	CHECKED	APPROVE



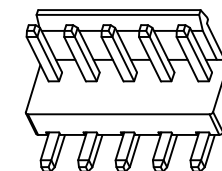
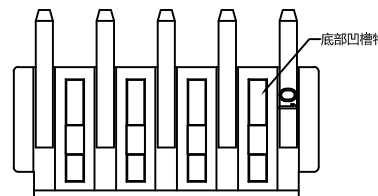
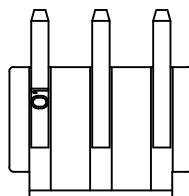
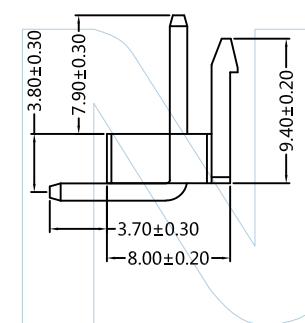
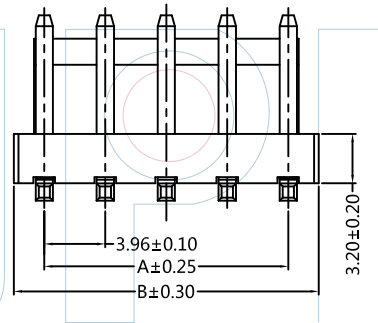
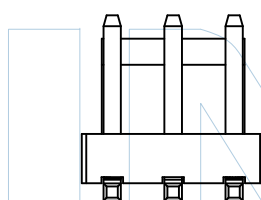
Recommended P.C.B Layout(Top Side)  
(PCB BOARD TOLERANCE±0.05)



PART NUMBER CODING  
W39603-1 XX R XX X X 3

No.of pins: 02-15P  
Contact plating: SN: Tin  
Color: W=White  
Packing: R=Reel

Pins	Dimensions	
	A	B
02	3.96	7.62
03	7.92	11.88
04	11.88	16.14
05	15.84	20.40
06	19.80	24.66
07	23.76	28.92
08	27.72	33.18
09	31.68	37.44
10	35.64	41.70
11	39.60	45.96
12	43.56	50.22
13	47.52	54.48
14	51.48	58.74
15	55.44	63.00



**WINPIN**  
Tel: +86 769 82581808 FAX: +86 769 81766192  
E-Mail: sales@winpin.net Http: www.winpin.net

NOTES:  
Current Rating: 7.0AMP  
Voltage Rating: 250V AC/DC  
Withstand Voltage: 1500V AC/DC  
Contact Resistance: 20mΩ Max  
Insulation Resistance: 1000MΩ Min  
Operation Temperature: -25°C ~ +85°C

Material:  
Contact : Brass  
Contact Plating: Sn over Ni  
Insulator : PA66

UNLESS OTHERWISE SPECIFIED DIMENSIONS ARE IN METRIC TOLERANCES ARE:  
DECIMALS Angle  
X.X: ±0.40 ± 3°  
X.XX: ±0.25  
X.XXX: ±0.15

PART NO: W39603-1XXRXXX3  
TITLE: VH 3.96mm Wafer 有靠背 90°平弯

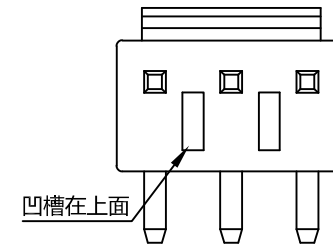
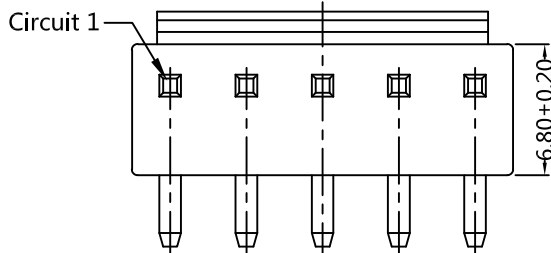
SCALE 1:1  
UNIT MM  
PROJ.   
SHEET

A0	2015/06/25	NEW	GF.He	Andy	Bobby
REV	DATE	MODIFICATION DESCRIPTION	DRAW	CHECKED	APPROVE



4P~15P

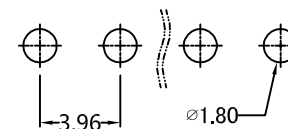
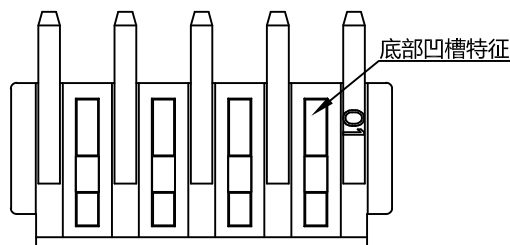
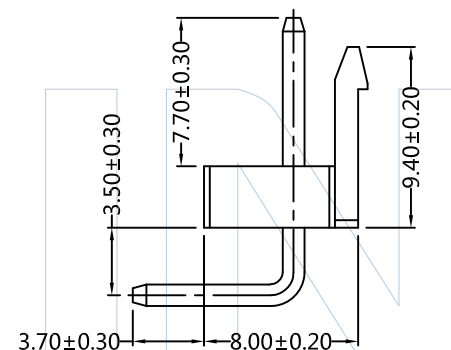
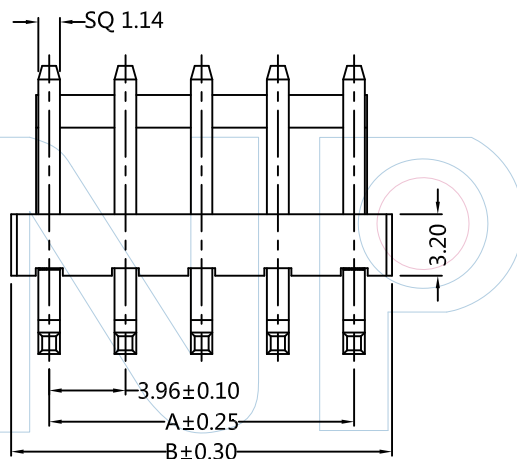
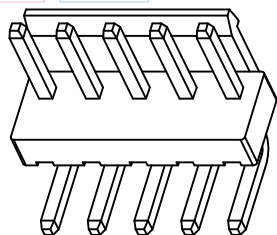
2P~3P



PART NUMBER CODING  
W39603-1 XX R XX X X 1

No. of pins: 02-15P  
Contact plating: SN: Tin  
Color: W: White  
Packing: B: PE Bag

Pins	Dimensions	
	A	B
02	3.96	7.92
03	7.92	11.88
04	11.88	15.84
05	15.84	19.80
06	19.80	23.76
07	23.76	27.72
08	27.72	31.68
09	31.68	35.64
10	35.64	39.60
11	39.60	43.56
12	43.56	47.52
13	47.52	51.48
14	51.48	55.44
15	55.44	59.40



Recommended P.C.B Layout (Top Side)  
(PCB BOARD TOLERANCE ±0.05)



Tel: +86 769 82581808 FAX: +86 769 81766192  
E-Mail: sales@winpin.net Http: www.winpin.net

PART NO: W39603-1XXRXXX1

TITLE: VH 3.96mm 90° Wafer 有靠背

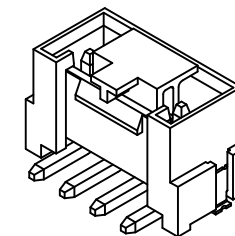
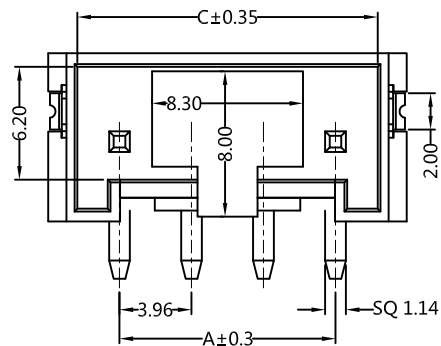
NOTES:  
Current Rating: 7.0A AC/DC  
Voltage Rating: 250V AC/DC  
Withstand Voltage: 1500V AC/DC  
Contact Resistance: 20mΩ Max  
Insulation Resistance: 1000MΩ Min  
Operation Temperature: -25°C ~ +85°C  
Applicable Terminal: T39603-PXX1  
Applicable Housing: H39603-1XXX1

MATERIAL:  
Contact: Brass  
Contact Plating: Sn over Ni  
Insulator: PA66, UL94V-0

UNLESS OTHERWISE SPECIFIED DIMENSIONS ARE IN METRIC  
TOLERANCES ARE:  
DECIMALS Angle  
X.X: ±0.40 ± 3°  
X.XX: ±0.25  
X.XXX: ±0.15

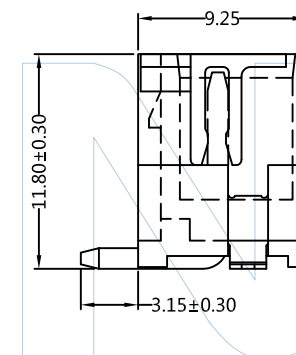
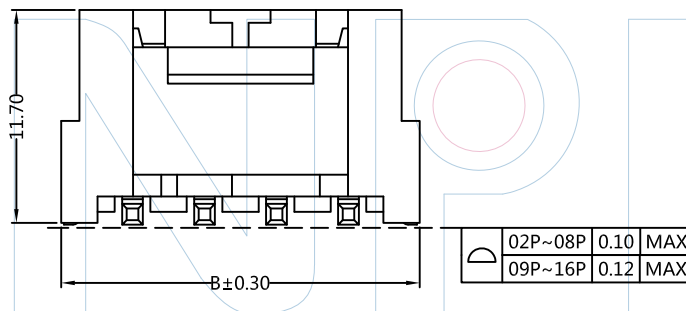
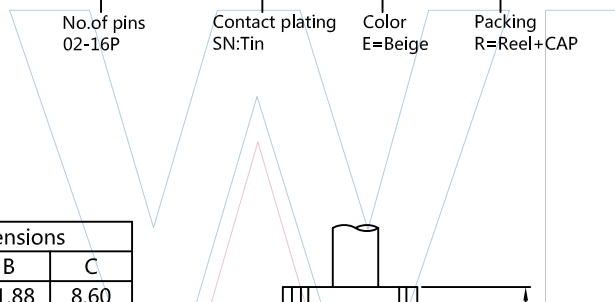
SCALE 1:1  
UNIT MM  
PROJ.   
SHEET

A0	2015/06/25	NEW	GF.He	Andy	
REV	DATE	MODIFICATION DESCRIPTION	DRAW	CHANGE	APPROVE

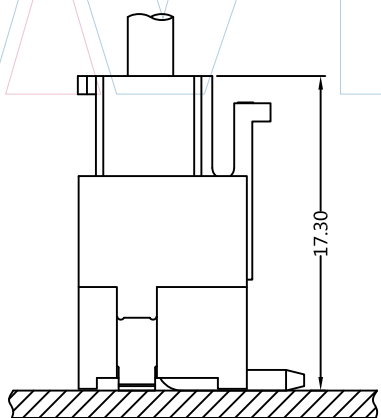


PART NUMBER CODING

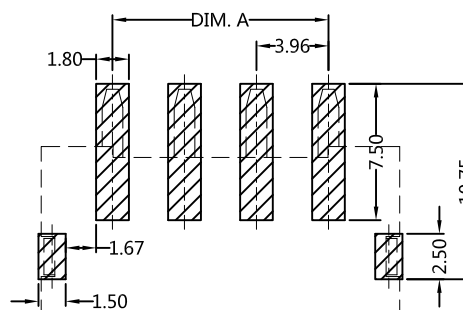
W39603-1 XX M XX X X 1



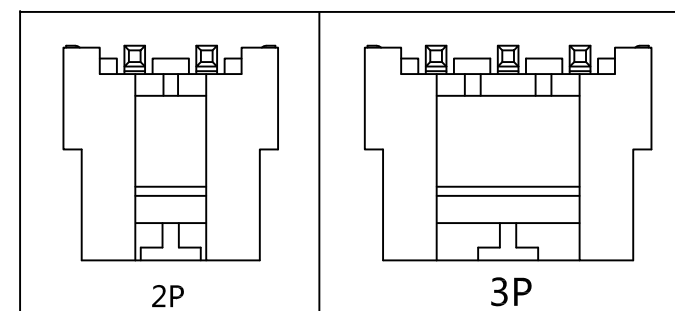
Pins	Dimensions		
	A	B	C
02	3.96	11.88	8.60
03	7.92	15.84	12.56
04	11.88	19.80	16.52
05	15.84	23.76	20.48
06	19.80	27.72	24.44
07	23.76	31.68	28.40
08	27.72	35.64	32.36
09	31.68	39.60	36.32
10	35.64	43.56	40.28
11	39.60	47.52	44.24
12	43.56	51.48	48.20
13	47.52	55.44	52.16
14	51.48	59.40	56.12
15	55.44	63.36	60.08
16	59.40	67.32	64.04



Assembly Layout



Recommended P.C.B Layout(Top Side)  
(PCB BOARD TOLERANCE±0.05)



Tel: +86 769 82581808 FAX: +86 769 81766192  
E-Mail: sales@winpin.net Http: www.winpin.net

NOTES:  
Current Rating:7.0A AC/DC  
Voltage Rating:250V AC/DC  
Withstand Voltage:1000V AC/DC  
Contact Resistance:20mΩ Max  
Insulation Resistance:1500MΩ Min  
Operation Temperature:-25℃~+105℃  
Applicable Terminal:T39603-PXX1  
Applicable Housing:H39603-1XXX1

MATERIAL:  
Contact:Brass  
Contact Plating:Sn over Ni  
Solde tabs:Phosphor Bronze  
Solde tabs Plating:Sn over Ni  
Insulator:PA9T, UL94V-0  
Cap:PA9T,UL94V-0,Natural

UNLESS OTHERWISE SPECIFIED DIMENSIONS ARE IN METRIC  
TOLERANCES ARE:  
DECIMALS Angle  
X.X:±0.40 ± 3°  
X.XX:±0.25  
X.XXX:±0.15

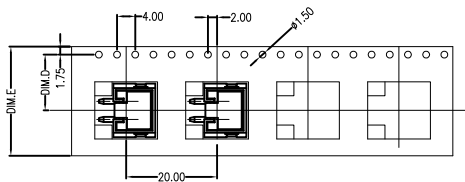
PART NO: W39603-1XXMXXXX1

TITLE: VH 3.96mm Wafer 180° SMT

SCALE 1:1  
UNIT MM  
PROJ.   
SHEET 1/2

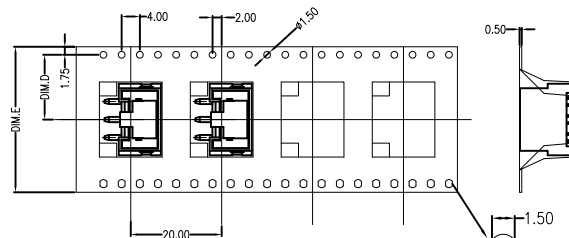
A0	2016/05/12	NEW	Hua.ZT		Hua.ZT
REV	DATE	MODIFICATION DESCRIPTIO	DRAW	CHANGE	APPROVE





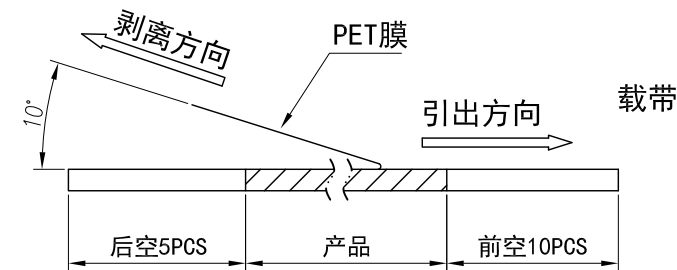
2 CONTACTS

产品引出方向

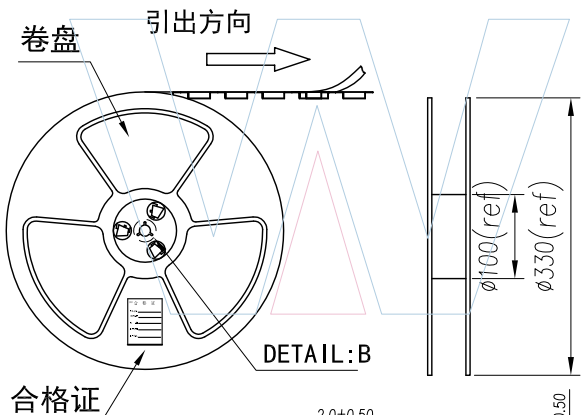


3~10 CONTACTS

产品引出方向

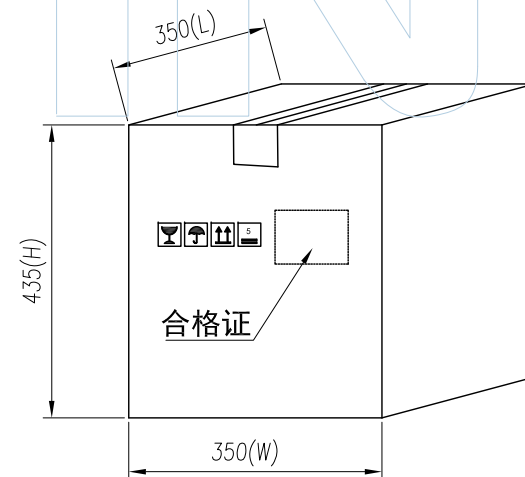
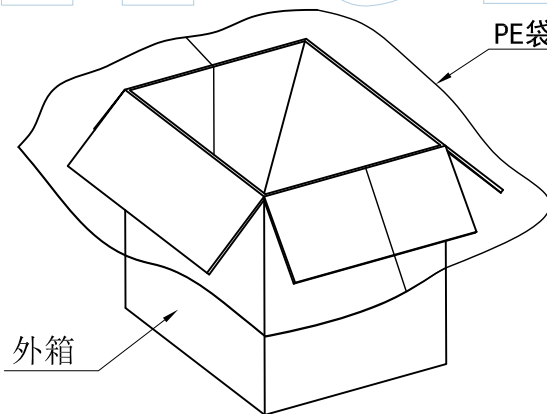


(PET膜剥离示意图)



装\*盘(参考列表一)

PE袋



Circuits	DIM. D	DIM. E	Q'ty/Reel	Packing (Reel/Caton)
2P	11.50	24	300PCS	15/Reel
3P	14.20	32	300PCS	11/Reel
4~6P	20.20	44	300PCS	8/Reel
7~9P	26.20	56	300PCS	7/Reel
10P	34.20	72	300PCS	5/Reel

DETAIL:B



Tel:+86 769 82581808 FAX:+86 769 81766192  
E-Mail:sales@winpin.net Http:www.winpin.net

PART NO: W39603-1XXMXXXR1

TITLE: VH 3.96mm Wafer 180° SMT 包装规范

包装说明:

- 把成品包入卷盘中, 每盘装300PCS, 卷盘上贴上合格证, 将装好产品的卷盘放进外箱中, 外箱内先套一个大PE袋, 外箱上贴贴合格证.
- 所有材料有害物控制需符合RoHS标准.

UNLESS OTHERWISE SPECIFIED DIMENSIONS ARE IN METRIC TOLERANCES ARE:  
DECIMALS Angle  
X.X:±0.40 ± 3°  
X.XX:±0.25  
X.XXX:±0.15

SCALE	1:1
UNIT	MM
PROJ.	
SHEET	2/2

A0	2016/05/12	NEW	Hua.ZT		Hua.ZT
REV	DATE	MODIFICATION DESCRIPTION	DRAW	CHANGE	APPROVE