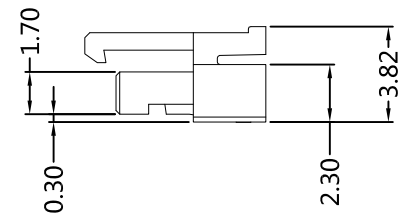
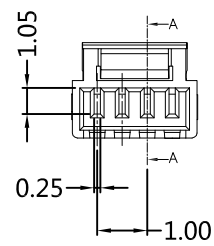
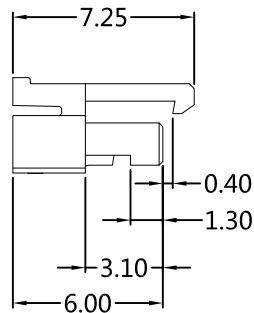


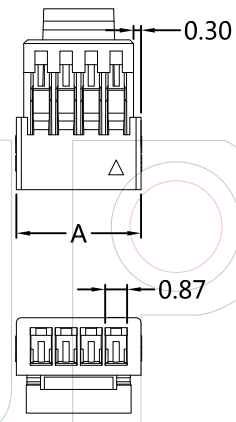
HSF  RoHS



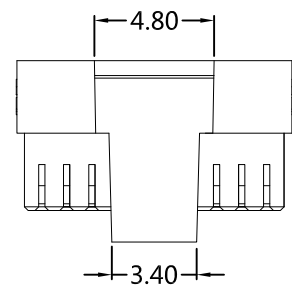
PART NUMBER CODING
H10003-1 XX X 1

No. of pins
02-20

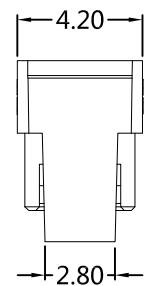
Color
W=White



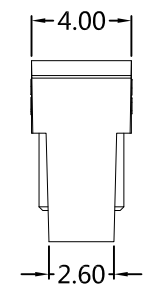
Dimensions(mm)					
POLES	A	B	POLES	A	B
2P	3.00	2.40	12P	13.00	12.40
3P	4.00	3.40	13P	14.00	13.40
4P	5.00	4.40	14P	15.00	14.40
5P	6.00	5.40	15P	16.00	15.40
6P	7.00	6.40	16P	17.00	16.40
7P	8.00	7.40	17P	18.00	17.40
8P	9.00	8.40	18P	19.00	18.40
9P	10.00	9.40	19P	20.00	19.40
10P	11.00	10.40	20P	21.00	20.40
11P	12.00	11.40			



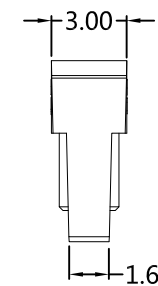
9-20卡扣 视图



4-8卡扣 视图



3卡扣 视图



2卡扣 视图

WINPIN

Tel: +86 769 82581808 FAX: +86 769 81766192
 E-Mail: sales@winpin.net Http: www.winpin.net

PART NO: H10003-1XXX1

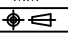
TITLE: SHU1.0mm带扣 Housing

NOTES:
 Current Rating: 1A (AWG#28)
 Withstand Voltage: 500V AC/DC
 Rated Voltage: 125V AC/DC
 Contact Resistance: 20mΩ Max
 Insulation Resistance: 100MΩ Min
 Operation Temperature: -40°C to +105
 Insulator: PA66 (UL94V-0)
 Applicable Terminal: T10003-PXX1

UNLESS OTHERWISE SPECIFIED DIMENSIONS ARE IN METRIC TOLERANCES ARE:
 DECIMALS Angle
 X.X: ±0.40 ± 3°
 X.XX: ±0.25
 X.XXX: ±0.15

SCALE 1:1

UNIT MM

PROJ. 

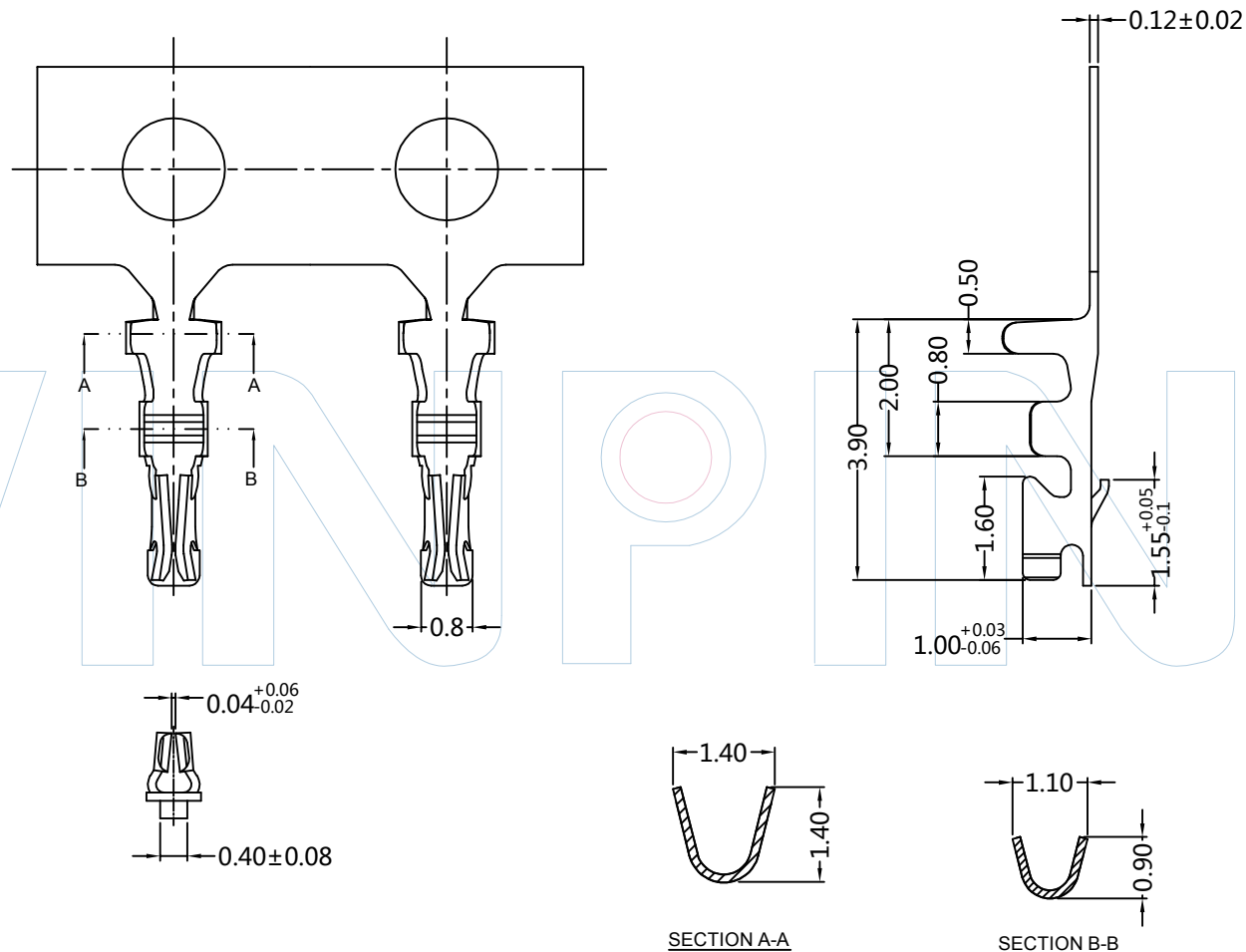
SHEET

A0	2020/1/06	NEW	Myron.Yuan		Myron.Yuan
REV	DATE	MODIFICATION DESCRIPTION	DRAW	CHANGE	APPROVE



PART NUMBER CODING
T10003-P XX 1

Contact plating
 SN: Tin



Tel: +86 769 82581808 FAX: +86 769 81766192
 E-Mail: sales@winpin.net Http: www.winpin.net

PART NO: T10003-PXX1

TITLE: SHU1.0mm terminal

NOTES:
 Current Rating: 1A
 Withstand Voltage: 500V AC/DC
 Rated Voltage: 125V AC/DC
 Contact Resistance: 20mΩ Max
 Insulation Resistance: 100MΩ Min
 Operation Temperature: -40°C to +105°C
 Material: Phosphor bronze
 Applicable Wire: AWG#28~#32
 Insulation O.D 0.4 to 0.8mm
 Applicable Housing: H10003-1XXX1

SPECIFIED DIMENSIONS
 ARE IN METRIC
 TOLERANCES ARE:
 DECIMALS Angle
 X.X: ±0.40 ± 3°
 X.XX: ±0.25
 X.XXX: ±0.15

SCALE 1:1
 UNIT MM
 PROJ.
 SHEET

A0	2020/1/06	NEW	Myron.Yuan	Myron.Yuan	
REV	DATE	MODIFICATION DESCRIPTIO	DRAW	CHANGE	APPROVE



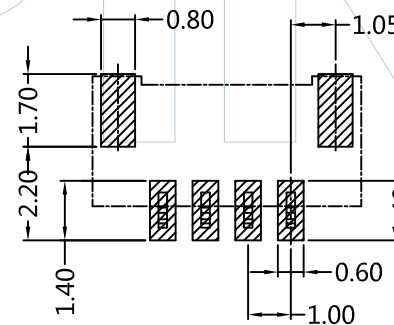
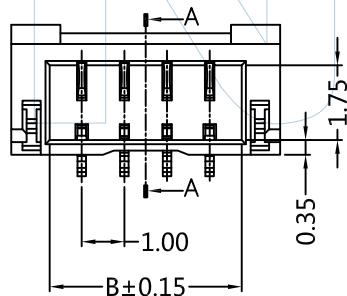
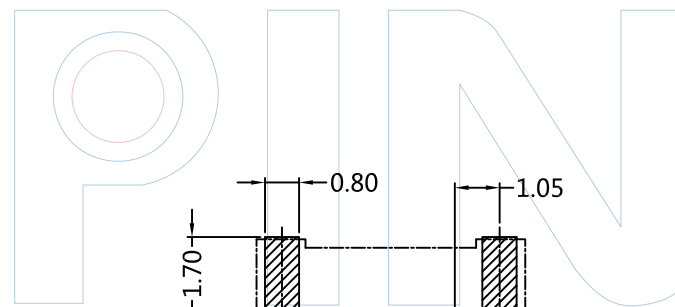
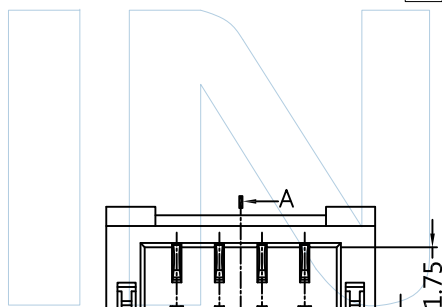
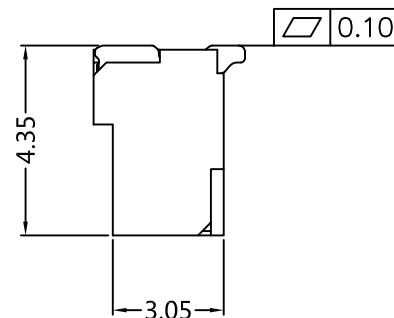
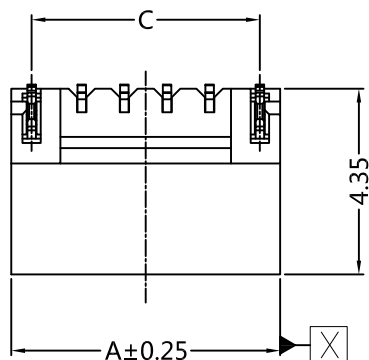
PART NUMBER CODING
W10003-1 XX M XX X X 1

No. of pins
02-20P

Contact plating
SN: Tin

Color
E=Beige

Packing
R=Tape&Reel



Recommended P.C.B Layout(Top Side)
(PCB BOARD TOLERANCE±0.05)

Dimensions(mm)

POLES	A	B	C	POLES	A	B	C
2P	4.30	2.50	3.35	12P	14.30	12.50	13.35
3P	5.30	3.50	4.35	13P	15.30	13.50	14.35
4P	6.30	4.50	5.35	14P	16.30	14.50	15.35
5P	7.30	5.50	6.35	15P	17.30	15.50	16.35
6P	8.30	6.50	7.35	16P	18.30	16.50	17.35
7P	9.30	7.50	8.35	17P	19.30	17.50	18.35
8P	10.30	8.50	9.35	18P	20.30	18.50	19.35
9P	11.30	9.50	10.35	19P	21.30	19.50	20.35
10P	12.30	10.50	11.35	20P	22.30	20.50	21.35
11P	13.30	11.50	12.35				



Tel: +86 769 82581808 FAX: +86 769 81766192
E-Mail: sales@winpin.net Http: www.winpin.net

PART NO: W10003-1XXMXXX1

TITLE: 1.0mm Wafer 180° SMT Type

NOTES:
Current Rating:1A
Withstand Voltage:500V AC/DC
Rated Voltage:50V AC/DC
Contact Resistance:20mΩ Max
Insulation Resistance:100MΩ Min
Temperature Range:-40°C to +105°C
Applicable Housing:H10003-1XXX1
Applicable Terminal:T10003-PXX1

Material
Contact Material:Copper Alloy
Fitting Nail:Copper Alloy
Contact Plating:Sn over Ni
Insulator Material:PA9T(UL94V-0)

UNLESS OTHERWISE SPECIFIED DIMENSIONS ARE IN METRIC
TOLERANCES ARE:
DECIMALS Angle
X.X:±0.40 ± 3°
X.XX:±0.25
X.XXX:±0.15

SCALE	1:1
UNIT	MM
PROJ.	
SHEET	

A0	2022/03/21	NEW	GF.He	Andy	Bobby
REV	DATE	MODIFICATION DESCRIPTION	DRAW	CHANGE	APPROVE



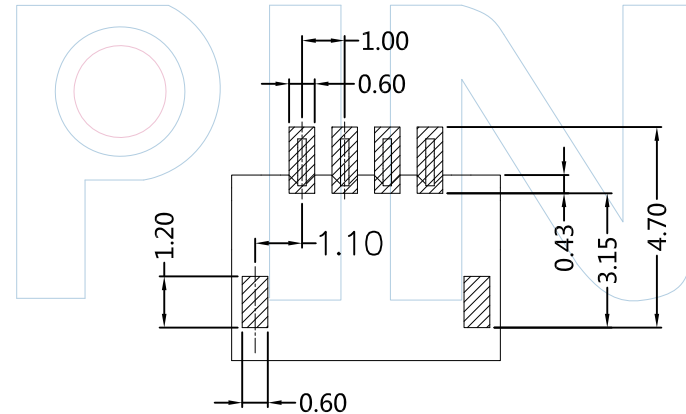
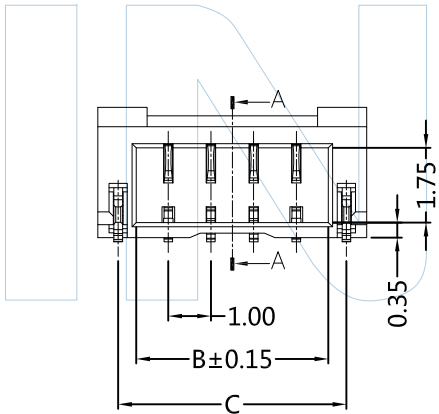
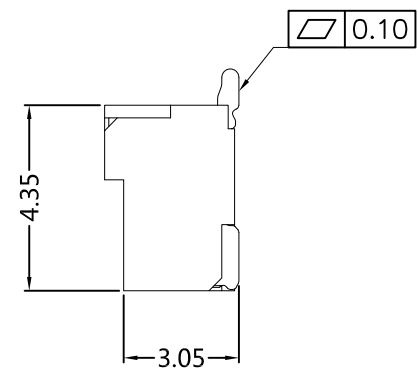
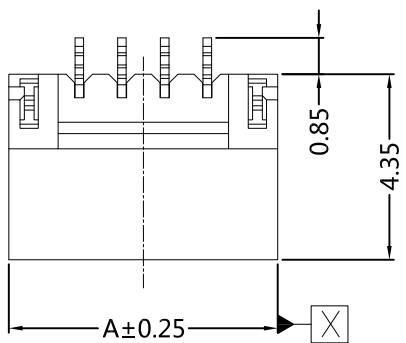
PART NUMBER CODING
W10003-1 XX Z XX X X 1

No. of pins
02-20P

Contact plating
SN: Tin

Color
E=Beige

Packing
R=Tape&Reel



Recommended P.C.B Layout(Top Side)
(PCB BOARD TOLERANCE±0.05)

Dimensions(mm)

POLES	A	B	C	POLES	A	B	C
2P	4.30	2.50	3.35	12P	14.30	12.50	13.35
3P	5.30	3.50	4.35	13P	15.30	13.50	14.35
4P	6.30	4.50	5.35	14P	16.30	14.50	15.35
5P	7.30	5.50	6.35	15P	17.30	15.50	16.35
6P	8.30	6.50	7.35	16P	18.30	16.50	17.35
7P	9.30	7.50	8.35	17P	19.30	17.50	18.35
8P	10.30	8.50	9.35	18P	20.30	18.50	19.35
9P	11.30	9.50	10.35	19P	21.30	19.50	20.35
10P	12.30	10.50	11.35	20P	22.30	20.50	21.35
11P	13.30	11.50	12.35				



Tel: +86 769 82581808 FAX: +86 769 81766192
E-Mail: sales@winpin.net Http: www.winpin.net

PART NO: W10003-1XXZXXX1

TITLE: 1.0mm Wafer 90° SMT Type

NOTES:
Current Rating:1A
Withstand Voltage:500V AC/DC
Rated Voltage:50V AC/DC
Contact Resistance:20mΩ Max
Insulation Resistance:100MΩ Min
Temperature Range:-40°C to +105°C
Applicable Housing:H10003-1XXX1
Applicable Terminal:T10003-PXX1

Material
Contact Material:Copper Alloy
Fitting Nail:Copper Alloy
Contact Plating:Sn over Ni
Insulator Material:PA9T(UL94V-0)

UNLESS OTHERWISE SPECIFIED DIMENSIONS ARE IN METRIC
TOLERANCES ARE:
DECIMALS Angle
X.X:±0.40 ± 3°
X.XX:±0.25
X.XXX:±0.15

SCALE 1:1
UNIT MM
PROJ.
SHEET

A0	2022/03/22	NEW	GF.He	Andy	Bobby
REV	DATE	MODIFICATION DESCRIPTIO	DRAW	CHANGE	APPROVE