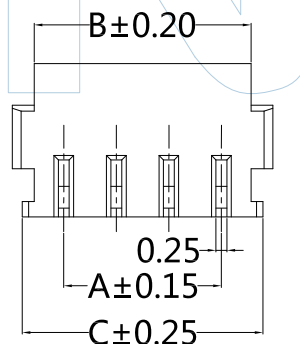
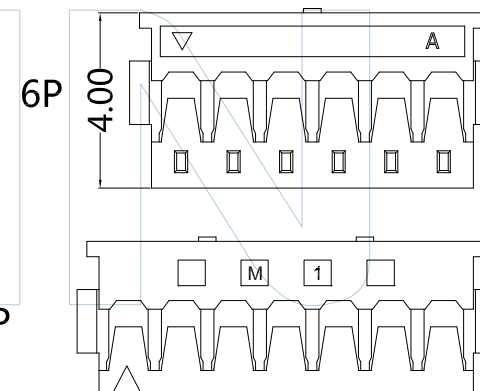
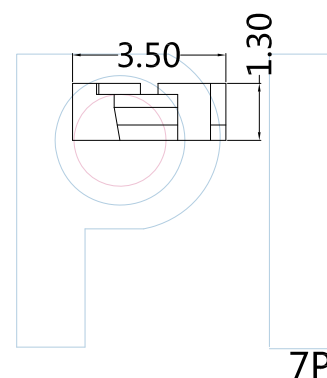
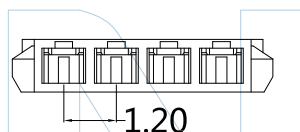
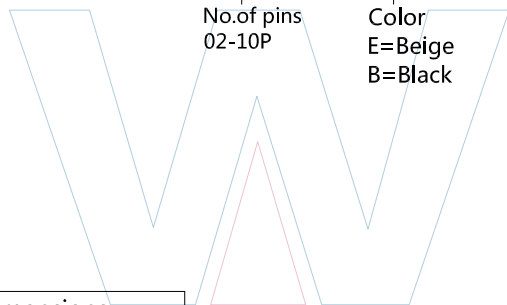
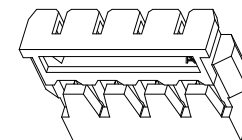
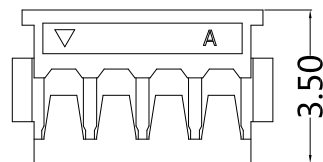




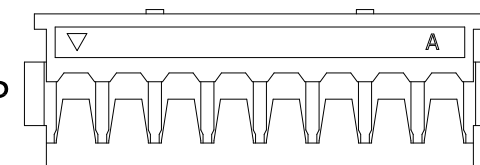
# PART NUMBER CODING H12001-1 XX X 1

No. of pins  
02-10P  
Color  
E=Beige  
B=Black

2~5P



7P



8P~10P

| Pins | Dimensions |       |       |
|------|------------|-------|-------|
|      | A          | B     | C     |
| 02   | 1.20       | 2.60  | 3.10  |
| 03   | 2.40       | 3.80  | 4.30  |
| 04   | 3.60       | 5.00  | 5.50  |
| 05   | 4.80       | 6.20  | 6.70  |
| 06   | 6.00       | 7.40  | 7.90  |
| 07   | 7.20       | 8.60  | 9.10  |
| 08   | 8.40       | 9.80  | 10.30 |
| 09   | 9.60       | 11.00 | 11.50 |
| 10   | 10.80      | 12.20 | 12.70 |



Tel: +86 769 82581808 FAX: +86 769 81766192  
E-Mail: sales@winpin.net Http: www.winpin.net

PART NO: H12001-1XXX1

TITLE: 1.20mm Housing

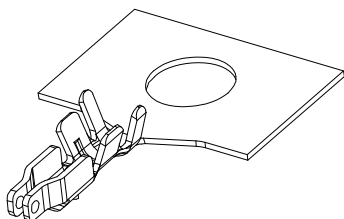
NOTES:  
Current Rating: 2.0AMP  
Voltage rating: 50V AC/ DC  
Withstand Voltage: 500V AC/Minute  
Contact Resistance: 20mΩ Max  
Insulation Resistance: 100MΩ Min  
Operation Temperature: -25°C ~ +85°C  
Applicable Terminal: T12001-PXX1  
Applicable Wafer: W12001-1XXZXXXX1

MATERIAL:  
Insulator Material: LCP(UL94V-0)

UNLESS OTHERWISE SPECIFIED DIMENSIONS ARE IN METRIC  
TOLERANCES ARE:  
DECIMALS Angle  
X.X: ±0.40 ± 3°  
X.XX: ±0.25  
X.XXX: ±0.15

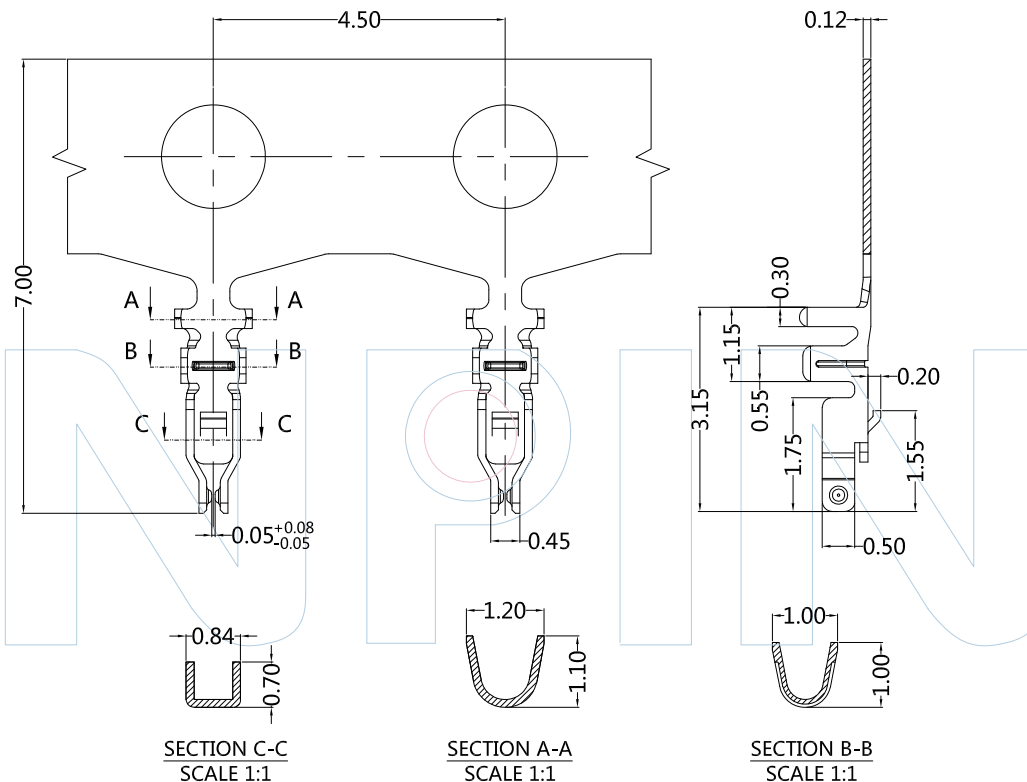
|       |     |
|-------|-----|
| SCALE | 1:1 |
| UNIT  | MM  |
| PROJ. |     |
| SHEET |     |

|     |            |                         |       |        |         |
|-----|------------|-------------------------|-------|--------|---------|
| A0  | 2015/06/25 | NEW                     | GF.He | Andy   |         |
| REV | DATE       | MODIFICATION DESCRIPTIO | DRAW  | CHANGE | APPROVE |



PART NUMBER CODING  
**T12001-P XX 1**

Contact plating  
 G0:Gold Flash



Tel:+86 769 82581808  
 E-Mail:sales@winpin.net

FAX:+86 769 81766192  
 Http:www.winpin.net

PART NO: T12001-PXX1

TITLE: 1.20mm Terminal

NOTES:

Current Rating:2.0AMP  
 Withstand Voltage:500V AC/DC  
 Contact Resistance:20mΩ Max  
 Insulation Resistance:100MΩ Min  
 Operation Temperature:-25°C~+85°C  
 Applicable Wire:AWG#28-30  
 Applicable Housing:H12001-1XXX1  
 Applicable Wafer:W12001-1XXZXXXX1

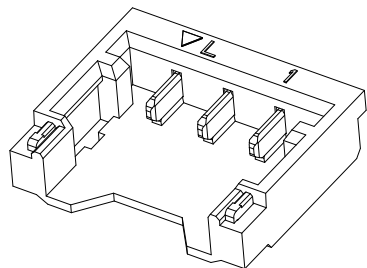
MATERIAL:

Contact:Phosphor Bronze  
 Contact Plating:Au over Ni

UNLESS OTHERWISE SPECIFIED DIMENSIONS ARE IN METRIC  
 TOLERANCES ARE:  
 DECIMALS Angle  
 X.X:±0.40 ± 3°  
 X.XX:±0.25  
 X.XXX:±0.15

|       |     |
|-------|-----|
| SCALE | 1:1 |
| UNIT  | MM  |
| PROJ. |     |
| SHEET |     |

|     |            |                         |        |        |         |
|-----|------------|-------------------------|--------|--------|---------|
| A0  | 2015/06/25 | NEW                     | Hua.ZT |        | Hua.ZT  |
| REV | DATE       | MODIFICATION DESCRIPTIO | DRAW   | CHANGE | APPROVE |



**PART NUMBER CODING**

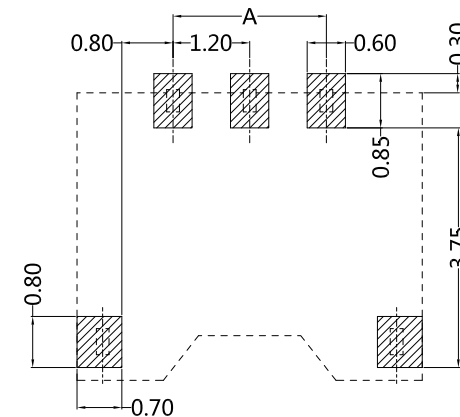
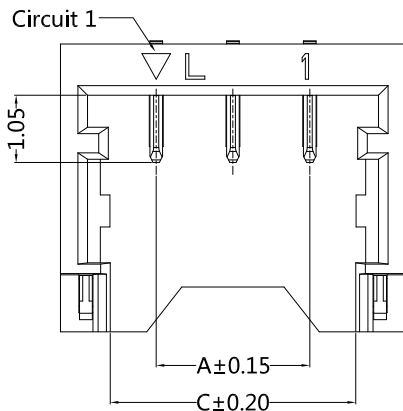
**W12001-1 XX Z XX X X 1**

No. of pins  
02P-10P

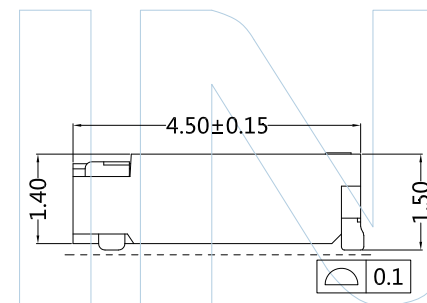
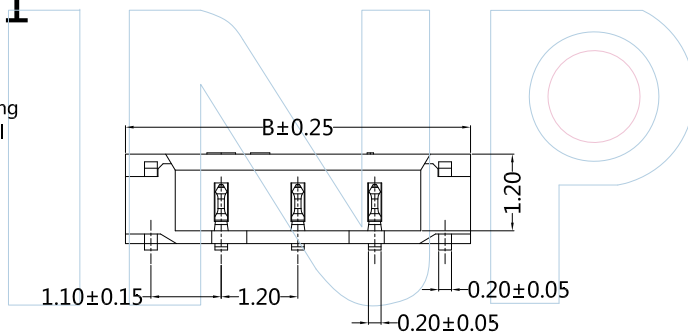
Contact plating  
G0:Gold Flash  
SN: Tin

Colour  
B:Black

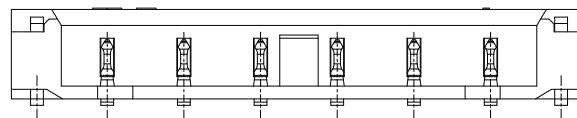
Packing  
R:Reel



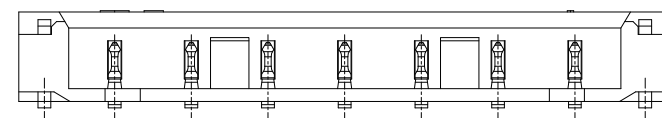
SUGGESTED PCB LAYOUT



| Pins | Dimensions |       |       |
|------|------------|-------|-------|
|      | A          | B     | C     |
| 02   | 1.20       | 4.20  | 2.64  |
| 03   | 2.40       | 5.40  | 3.84  |
| 04   | 3.60       | 6.60  | 5.04  |
| 05   | 4.80       | 7.80  | 6.24  |
| 06   | 6.00       | 9.00  | 7.44  |
| 07   | 7.20       | 10.20 | 8.64  |
| 08   | 8.40       | 11.40 | 9.84  |
| 09   | 9.60       | 12.60 | 11.04 |
| 10   | 10.80      | 13.80 | 12.24 |



6P With Sticking Point



7P~10P With Sticking Point



Tel: +86 769 82581808 FAX: +86 769 81766192  
E-Mail: sales@winpin.net Http: www.winpin.net

PART NO: W12001-1XXZXXX1

TITLE: 1.20mm 90° SMT Wafer

**NOTES:**  
Current Rating: 2.0A AC/DC  
Voltage rating: 50V AC/ DC  
Withstand Voltage: 500V AC/Minute  
Contact Resistance: 20mΩ Max  
Insulation Resistance: 100MΩ Min  
Operation Temperature: -25°C~+85°C  
Applicable Terminal: T12001-PXX1  
Applicable Housing: H12001-1XXX1

**MATERIAL:**  
Insulator Material: PA9T(UL94V-0)  
Contact Material: Phosphor Bronze  
Contact Plating: Au or Sn over Ni  
Solder Tabs: Brass, Tin Plated

UNLESS OTHERWISE SPECIFIED DIMENSIONS ARE IN METRIC  
TOLERANCES ARE:  
DECIMALS Angle  
X.X: ±0.40 ± 3°  
X.XX: ±0.25  
X.XXX: ±0.15

|       |     |
|-------|-----|
| SCALE | 1:1 |
| UNIT  | MM  |
| PROJ. |     |
| SHEET |     |

|     |            |                         |             |        |             |
|-----|------------|-------------------------|-------------|--------|-------------|
| A0  | 2020/12/04 | NEW                     | Jason.Huang |        | Jason.Huang |
| REV | DATE       | MODIFICATION DESCRIPTIO | DRAW        | CHANGE | APPROVE     |