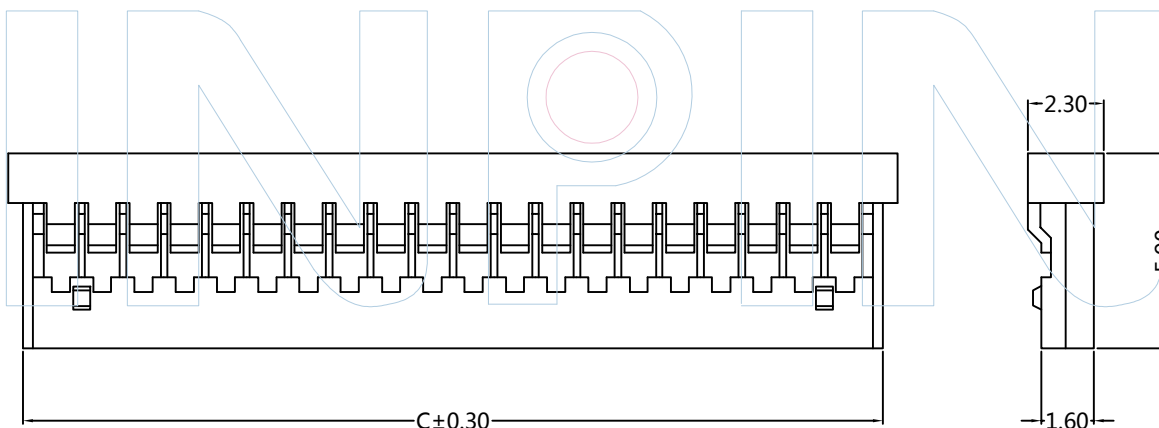


PART NUMBER CODING
H12505-1 XX X 1

No. of pins
02-30P

Color
W=White



Circuit	Part no.	Dimensions(mm)			Q'TY /Reel
		A	B	C	
20	H12505-120X1	23.75	26.95	26.05	1.000
25	H12505-125X1	30.00	33.20	32.30	1.000
30	H12505-130X1	36.25	39.45	38.55	1.000



Tel: +86 769 82581808 FAX: +86 769 81766192
 E-Mail: sales@winpin.net Http: www.winpin.net

PART NO: H12505-1XXX1

TITLE: HRS DF-14 1.25mm WAFER Housing

NOTES:
 Current Rating: 1.0AMP
 Withstand Voltage: 100V AC/DC
 Contact Resistance: 20mΩ Max
 Insulation Resistance: 100MΩ Min
 Operation Temperature: -25°C to +85°C
 Applicable Terminal: T12505-PXX1

Material:
 Contact Material: Phosphor Bronze or Brass
 Contact Plating: Au or Sn over Ni
 Insulator Material: PA66(UL94V-0)

UNLESS OTHERWISE SPECIFIED DIMENSIONS ARE IN METRIC
 TOLERANCES ARE:
 DECIMALS Angle
 X.X: ±0.40 ± 3°
 X.XX: ±0.25
 X.XXX: ±0.15

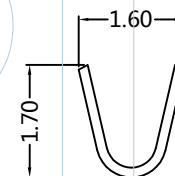
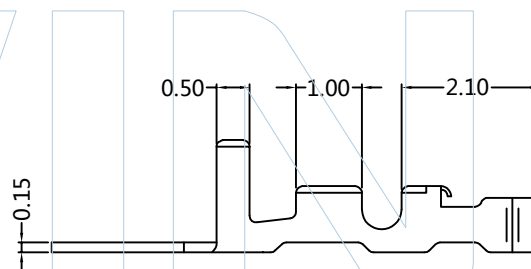
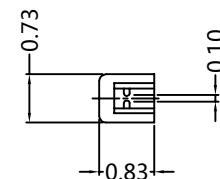
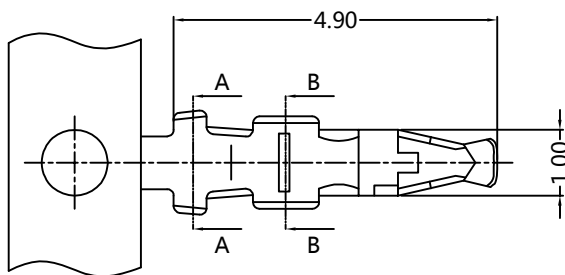
SCALE	1:1
UNIT	MM
PROJ.	
SHEET	

A0	2015/06/25	NEW	Hua.ZT		Hua.ZT
REV	DATE	MODIFICATION DESCRIPTION	DRAW	CHANGE	APPROVE

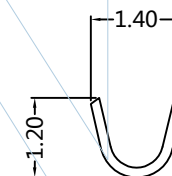


PART NUMBER CODING
T12505-P XX 1

Contact plating
G0:Gold Flash



Section A - A



Section B - B

Specification & Ordering Information

Part no.	Thickness	Material	Finish	Wire Range	Insulation O.D	Q'TY/Reel
T12505-PG01	0.15	Phosphor Bronze	Tin-Plated	AWG#28~#32	0.90mm MAX.	10000PCS



Tel: +86 769 82581808
E-Mail: sales@winpin.net

FAX: +86 769 81766192
Http: www.winpin.net

PART NO: T12505-PXX1

TITLE: HRS DF-14 1.25mm WAFER TERMINAL

NOTES:
Current Rating: 1.0AMP
Withstand Voltage: 100V AC/DC
Contact Resistance: 20mΩ Max
Insulation Resistance: 100MΩ Min
Operation Temperature: -25°C to +85°C
Applicable Wires: AWG28~32#
Applicable Housing: H12505-1XXX1

Material:
Contact Material: Phosphor Bronze

UNLESS OTHERWISE SPECIFIED DIMENSIONS ARE IN METRIC
TOLERANCES ARE:
DECIMALS ± 0.40
X.XX ± 0.25
X.XXX ± 0.15
Angle ± 3°

SCALE 1:1
UNIT MM
PROJ.

A0	2015/06/25	NEW	Hua.ZT		Hua.ZT
REV	DATE	MODIFICATION DESCRIPTIO	DRAW	CHANGE	APPROVE

