



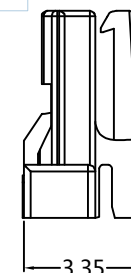
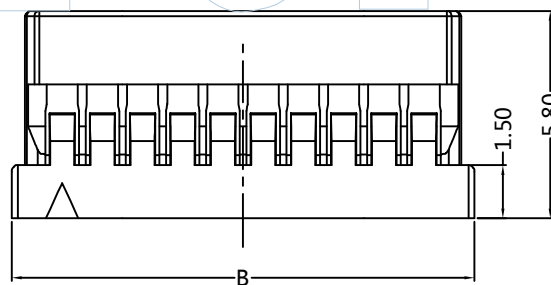
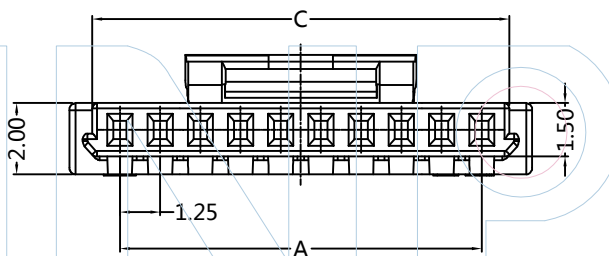
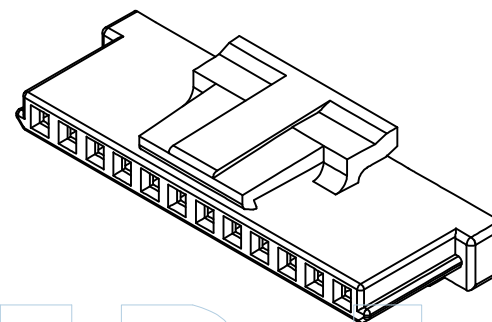
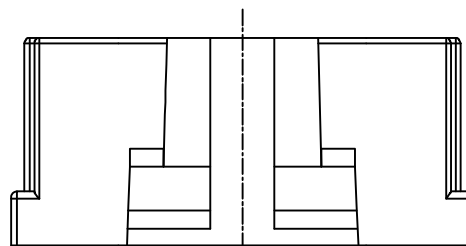
PART NUMBER CODING

H12505-1 XX X 3

No.of pins
02-30P

Color
W=White

Pins	Dimensions		
	A	B	C
2P	1.25	4.40	2.75
3P	2.50	5.65	4.00
4P	3.75	6.90	5.25
5P	5.00	8.15	6.50
6P	6.25	9.40	7.75
7P	7.50	10.65	9.00
8P	8.75	11.90	10.25
9P	10.00	13.15	11.50
10P	11.25	14.40	12.75
11P	12.50	15.65	14.00
12P	13.75	16.90	15.25
15P	17.50	20.65	19.00
20P	23.75	26.90	25.25
25P	30.00	33.15	31.50
30P	36.25	39.40	37.75



Tel: +86 769 82581808 FAX: +86 769 81766192
E-Mail: sales@winpin.net Http: www.winpin.net

PART NO: H12505-1XXX3

TITLE: 1.25mm Housing

NOTES:
Current Rating:1.0A
Withstand Voltage:500V AC/Minute
Contact Resistance:30mΩ Max
Insulation Resistance:500MΩ Min
Operation Temperature:-25°C~+85°C
Applicable Terminal:T12505-PXX3
Applicable Wafer: W12505-1XXXXXXX3

Material:
Insulator Material:PA66(UL94V-0)

UNLESS OTHERWISE SPECIFIED DIMENSIONS ARE IN METRIC
TOLERANCES ARE:
DECIMALS Angle
X.X:±0.40 ± 3°
X.XX:±0.25
X.XXX:±0.15

SCALE	1:1
UNIT	MM
PROJ.	
SHEET	

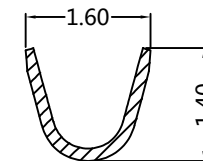
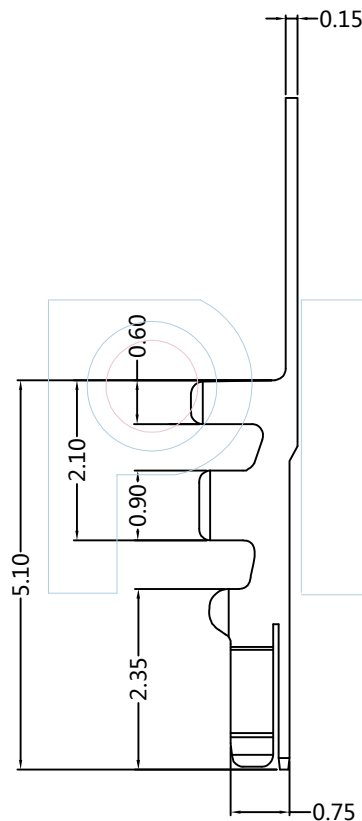
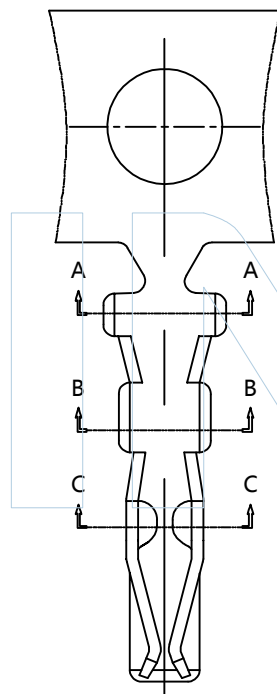
A0	2015/06/25	NEW	Hua.ZT		Hua.ZT
REV	DATE	MODIFICATION DESCRIPTIO	DRAW	CHANGE	APPROVE



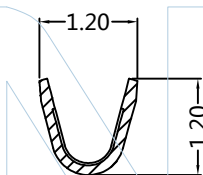
PART NUMBER CODING

T12505-P XX 3

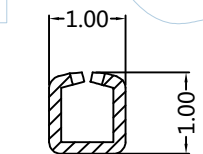
Contact plating
 G0:Gold Flash
 G1:3U"Gold
 G2:5U"Gold
 G3:10U"Gold
 G4:15U"Gold
 G5:20U"Gold
 G6:30U"Gold
 S0:Gold Flash/Tin
 S1:3U"Gold/Tin
 S2:5U"Gold/Tin
 S3:10U"Gold/Tin
 S4:15U"Gold/Tin
 S6:30U"Gold/Tin
 SN:Tin



SECTION A-A



SECTION B-B



SECTION C-C



Tel: +86 769 82581808 FAX: +86 769 81766192
 E-Mail: sales@winpin.net Http: www.winpin.net

PART NO: T12505-PXX3

TITLE: 1.25mm Terminal

NOTES:
 Current Rating:1.0A
 Withstand Voltage:500V AC/Minute
 Contact Resistance:30mΩ Max
 Insulation Resistance:500MΩ Min
 Operation Temperature:-25°C~+85°C
 Applicable Wires:AWG28~32#
 Applicable Terminal:T12505-PXX3
 Applicable Wafer: W12505-1XXXXXXX3

Material:
 Contact Material:Phosphor Bronze
 Contact Plating:Au or Sn over Ni

UNLESS OTHERWISE SPECIFIED DIMENSIONS ARE IN METRIC
 TOLERANCES ARE:
 DECIMALS Angle
 X.X:±0.40 ± 3°
 X.XX:±0.25
 X.XXX:±0.15

SCALE	1:1
UNIT	MM
PROJ.	
SHEET	

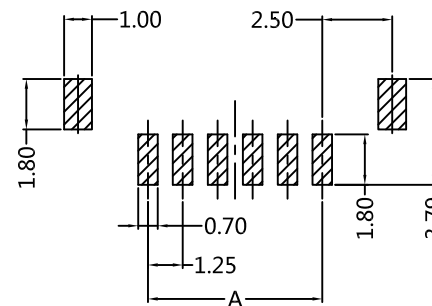
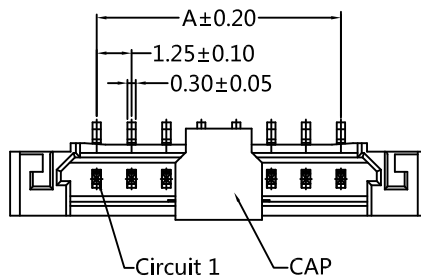
A0	2022/04/24	NEW	GF.He		Andy
REV	DATE	MODIFICATION DESCRIPTIO	DRAW	CHANGE	APPROVE



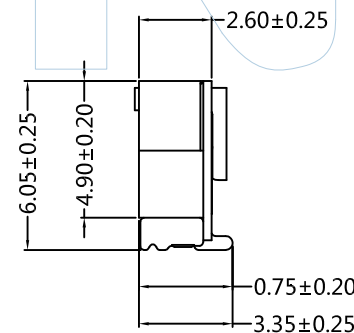
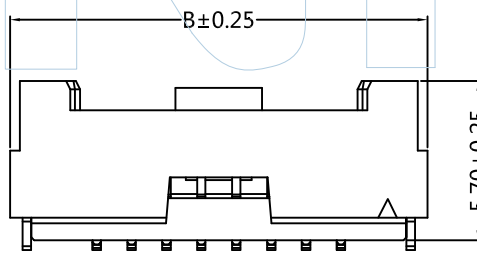
PART NUMBER CODING

W12505-1 XX M XX X X 3

No. of pins: 02P-30P
 Contact plating: G0:Gold Flash, G1:3U"Gold, G2:5U"Gold, G3:10U"Gold, G4:15U"Gold, G5:20U"Gold, G6:30U"Gold, S0:Gold Flash/Tin, S1:3U"Gold/Tin, S2:5U"Gold/Tin, S3:10U"Gold/Tin, S4:15U"Gold/Tin, S6:30U"Gold/Tin, SN:Tin
 Color: E=Beige
 Packing: R=Reel+CAP



Recommended P.C.B Layout(Top Side)
 (PCB BOARD TOLFRANCF±0.05)



WINPIN

Pins	Dimensions		Pins	Dimensions	
	A	B		A	B
2P	1.25	7.45	11P	12.50	18.70
3P	2.50	8.70	12P	13.75	19.95
4P	3.75	9.95	13P	15.00	21.20
5P	5.00	11.20	14P	16.25	22.45
6P	6.25	12.45	15P	17.50	23.70
7P	7.50	13.70	20P	23.75	29.95
8P	8.75	14.95	25P	30.00	36.20
9P	10.00	16.20	30P	36.25	42.45
10P	11.25	17.45			

WINPIN
 Tel:+86 769 82581808 FAX:+86 769 81766192
 E-Mail:sales@winpin.net Http://www.winpin.net

PART NO: W12505-1XXMXXX3
 TITLE: 1.25 Wafer 180°SMT

NOTES:
 Current Rating:1.0A AC,DC
 Withstand Voltage:500V AC/Minute
 Contact Resistance:30mΩ Max
 Insulation Resistance:500MΩ Min
 Operation Temperature:-25°C to +85°C
 Applicable Terminal: T12505-PXX3
 Applicable Housing: H12505-1XXX3

Material:
 Contact Material:Brass
 Contact Plating:Au or Sn over Ni
 Solder Tabs:Brass ,Au or Sn over Ni
 Insulator Material:PA6T(UL94V-0)

UNLESS OTHERWISE SPECIFIED DIMENSIONS ARE IN METRIC
 TOLERANCES ARE:
 DECIMALS Angle
 X.X:±0.40 ± 3°
 X.XX:±0.25
 X.XXX:±0.15

SCALE 1:1
 UNIT MM
 PROJ.
 SHEET

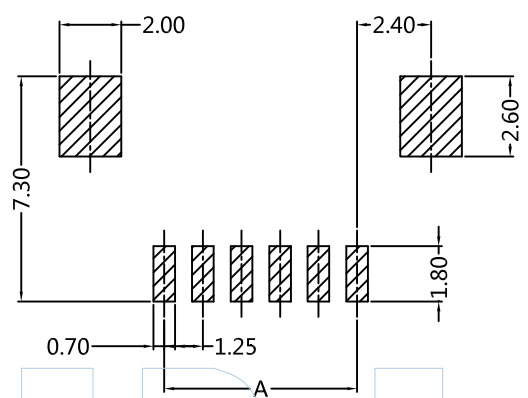
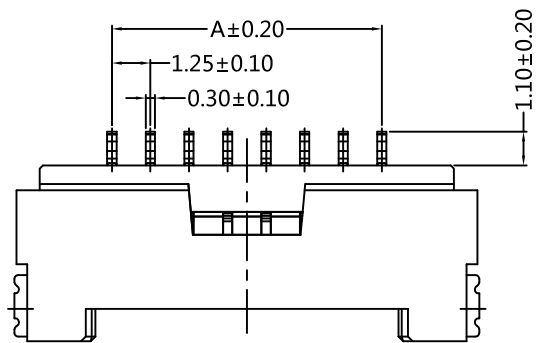
A0	2022/04/24	NEW	GF.He	Andy	
REV	DATE	MODIFICATION DESCRIPTIO	DRAW	CHANGE	APPROVE



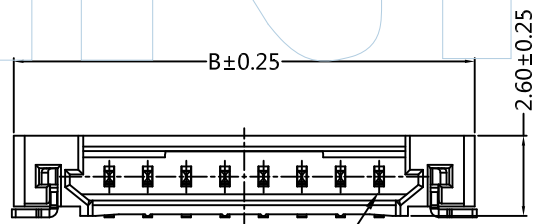
PART NUMBER CODING

W12505-1 XX Z XX X X 3

No. of pins: 02P-30P
 Contact plating: G0:Gold Flash, G1:3U"Gold, G2:5U"Gold, G3:10U"Gold, G4:15U"Gold, G5:20U"Gold, G6:30U"Gold, S0:Gold Flash/Tin, S1:3U"Gold/Tin, S2:5U"Gold/Tin, S3:10U"Gold/Tin, S4:15U"Gold/Tin, S6:30U"Gold/Tin, SN:Tin
 Color: E=Beige
 Packing: R=Tape&Reel



Recommended P.C.B Layout(Top Side)
 (PCB BOARD TOLFRANCF±0.05)



Circuit 1

Pins	Dimensions		Pins	Dimensions	
	A	B		A	B
2P	1.25	7.45	11P	12.50	18.70
3P	2.50	8.70	12P	13.75	19.95
4P	3.75	9.95	13P	15.00	21.20
5P	5.00	11.20	14P	16.25	22.45
6P	6.25	12.45	15P	17.50	23.70
7P	7.50	13.70	20P	23.75	29.95
8P	8.75	14.95	25P	30.00	36.20
9P	10.00	16.20	30P	36.25	42.45
10P	11.25	17.45			

Tel: +86 769 82581808 FAX: +86 769 81766192
 E-Mail: sales@winpin.net Http: www.winpin.net

PART NO: W12505-1XXZXXX3
 TITLE: 1.25 Wafer 90°SMT

NOTES:
 Current Rating: 1.0A AC, DC
 Withstand Voltage: 500V AC/Minute
 Contact Resistance: 30mΩ Max
 Insulation Resistance: 500MΩ Min
 Operation Temperature: -25°C to +85°C
 Applicable Terminal: T12505-PXX3
 Applicable Housing: H12505-1XXX3

Material:
 Contact Material: Brass
 Contact Plating: Au or Sn over Ni
 Solder Tabs: Brass, Au or Sn over Ni
 Insulator Material: PA6T(UL94V-0)

UNLESS OTHERWISE SPECIFIED DIMENSIONS ARE IN METRIC
 TOLERANCES ARE:
 DECIMALS Angle
 X.X: ±0.40 ± 3°
 X.XX: ±0.25
 X.XXX: ±0.15

SCALE	1:1
UNIT	MM
PROJ.	
SHEET	

A0	2015/04/24	NEW	GF.He	Andy	
REV	DATE	MODIFICATION DESCRIPTION	DRAW	CHANGE	APPROVE