



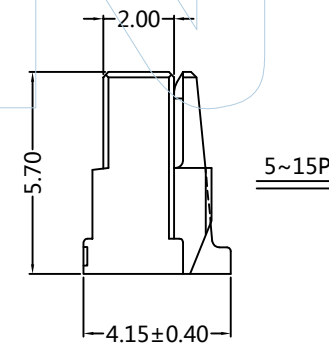
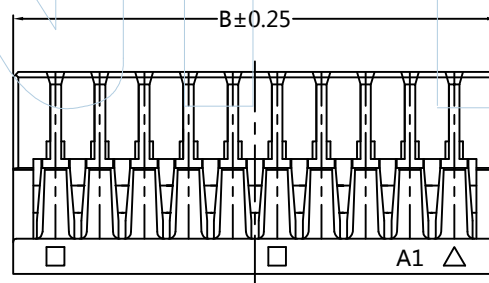
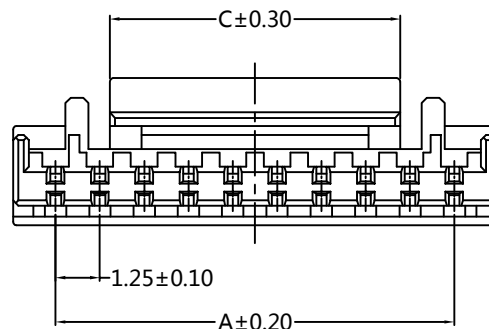
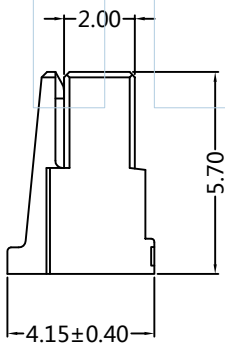
PART NUMBER CODING

H12506-1 XX X 1

No. of pins
02-15P

Color
W=White

Pins	Dimensions		
	A	B	C
2P	1.25	3.65	1.90
3P	2.50	4.90	3.10
4P	3.75	6.15	4.25
5P	5.00	7.40	4.25
6P	6.25	8.65	6.25
7P	7.50	9.90	6.25
8P	8.75	11.15	6.25
9P	10.00	12.40	6.25
10P	11.25	13.65	8.20
11P	12.50	14.90	8.20
12P	13.75	16.15	8.20
13P	15.00	17.40	8.20
14P	16.25	18.65	8.20
15P	17.50	19.90	8.20



Tel: +86 769 82581808 FAX: +86 769 81766192
E-Mail: sales@winpin.net Http: www.winpin.net

PART NO: H12506-1XXX1

TITLE: GH 1.25mm HOUSING

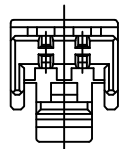
NOTES:
Current Rating: 1.0AMP
Withstand Voltage: 100V AC/DC
Contact Resistance: 30mΩ Max
Insulation Resistance: 100MΩ Min
Operation Temperature: -25°C to +85°C
Applicable Terminal: T12506-PXX1

Material:
Insulator Material: PA66(UL94V-2)

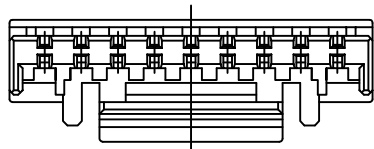
UNLESS OTHERWISE SPECIFIED DIMENSIONS ARE IN METRIC
TOLERANCES ARE:
DECIMALS Angle
X.X: ±0.40 ± 3°
X.XX: ±0.25
X.XXX: ±0.15

SCALE 1:1
UNIT MM
PROJ.
SHEET 1/2

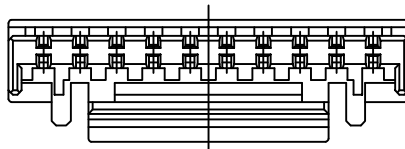
A0	2021/05/13	NEW	Andy	Andy	
REV	DATE	MODIFICATION DESCRIPTION	DRAW	CHANGE	APPROVE



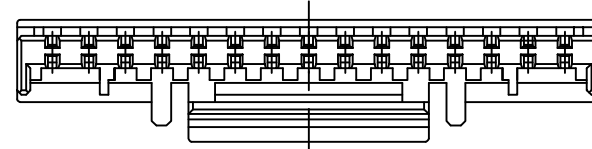
2P



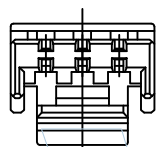
9P



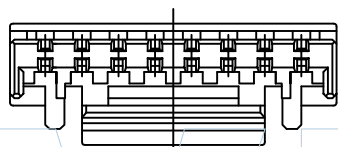
10P



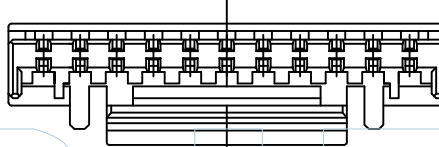
15P



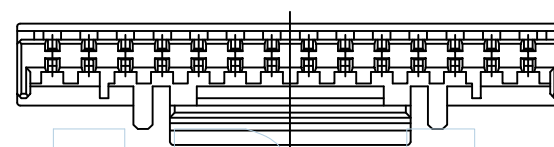
3P



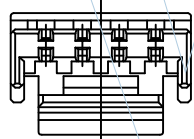
8P



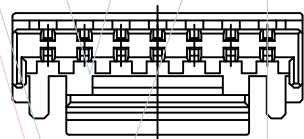
11P



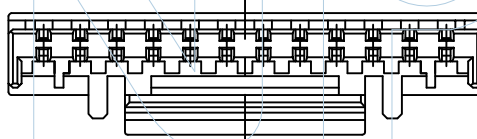
14P



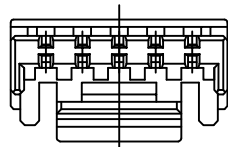
4P



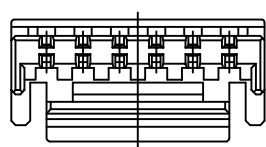
7P



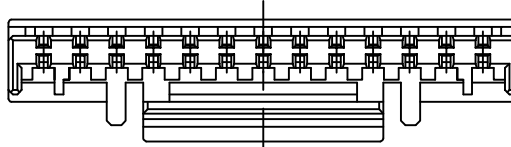
12P



5P



6P



13P

样式图



Tel: +86 769 82581808
E-Mail: sales@winpin.net

FAX: +86 769 81766192
Http: www.winpin.net

PART NO: H12506-1XXX1

TITLE: GH 1.25mm HOUSING

NOTES:
Current Rating: 1.0AMP
Withstand Voltage: 100V AC/DC
Contact Resistance: 30mΩ Max
Insulation Resistance: 100MΩ Min
Operation Temperature: -25°C to +85°C
Applicable Terminal: T12506-PXX1

Material:
Insulator Material: PA66(UL94V-2)

UNLESS OTHERWISE SPECIFIED DIMENSIONS ARE IN METRIC
TOLERANCES ARE:
DECIMALS Angle
X.X: ±0.40 ± 3°
X.XX: ±0.25
X.XXX: ±0.15

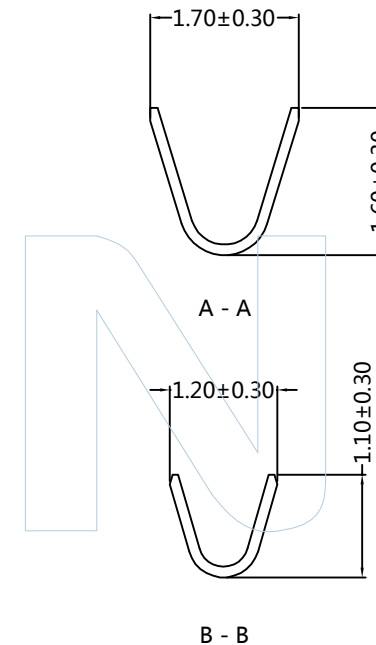
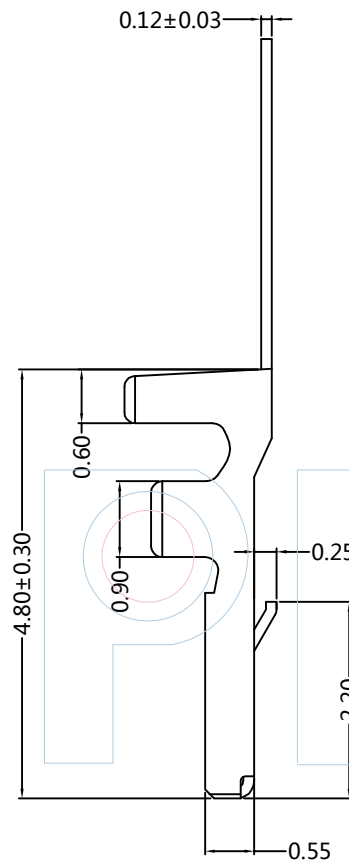
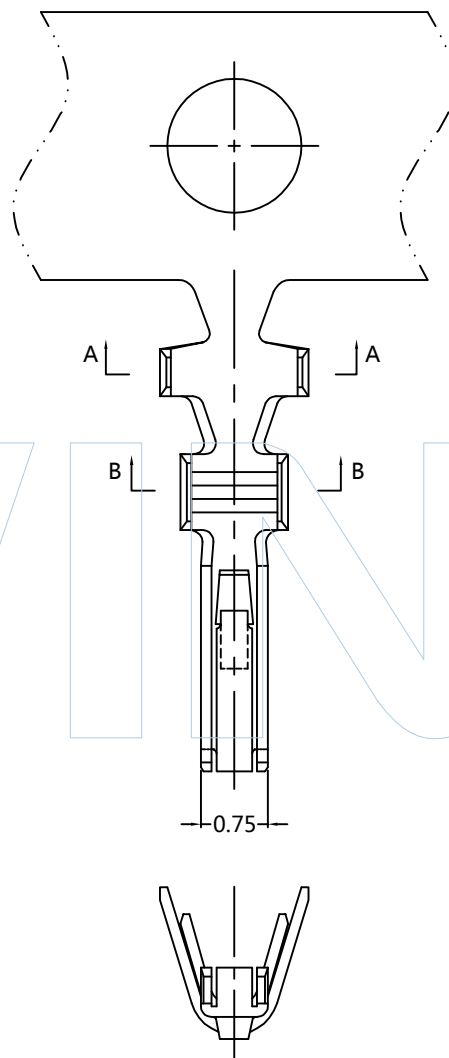
SCALE 1:1
UNIT MM
PROJ.
SHEET 2/2

A0	2021/05/13	NEW	Andy		Andy
REV	DATE	MODIFICATION DESCRIPTION	DRAW	CHANGE	APPROVE



PART NUMBER CODING
T12506-P XX 1

Contact plating
 SN: Tin



Tel: +86 769 82581808
 E-Mail: sales@winpin.net

FAX: +86 769 81766192
 Http: www.winpin.net

PART NO: T12506-PXX1

TITLE: GH 1.25mm WAFER TERMINAL

NOTES:
 Current Rating: 1.0AMP
 Withstand Voltage: 100V AC/DC
 Contact Resistance: 30mΩ Max
 Insulation Resistance: 100MΩ Min
 Operation Temperature: -25°C to +85°C
 Applicable Wires: AWG26~30#
 Applicable Housing: H12506-1XXX1

Material:
 Contact Material: Phosphor Bronze

UNLESS OTHERWISE SPECIFIED DIMENSIONS ARE IN METRIC
 TOLERANCES ARE:
 DECIMALS Angle
 X.X: ±0.40 ± 3°
 X.XX: ±0.25
 X.XXX: ±0.15

SCALE	1:1
UNIT	MM
PROJ.	
SHEET	

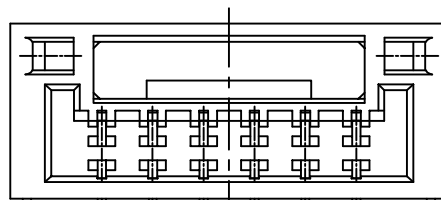
A0	2021/05/13	NEW	Andy		Andy
REV	DATE	MODIFICATION DESCRIPTION	DRAW	CHANGE	APPROVE



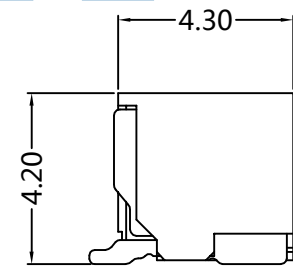
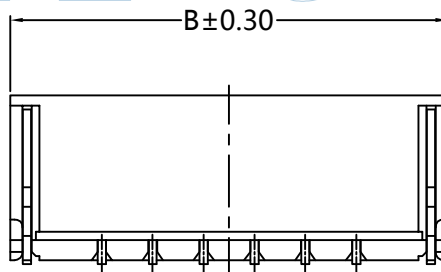
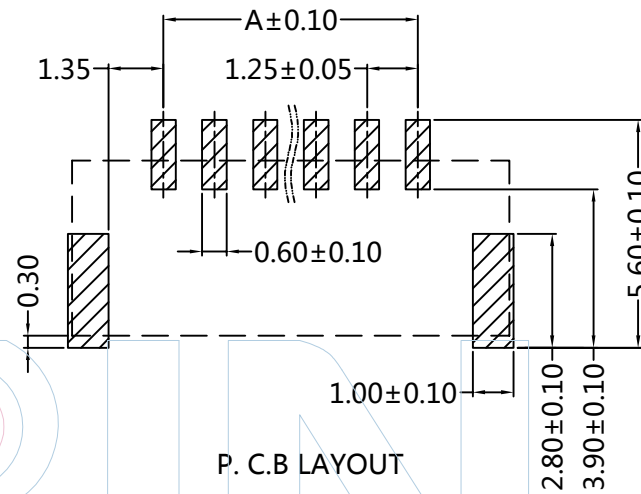
PART NUMBER CODING

W12506-1 XX M XX X X 1

No. of pins: 02-15P
 Contact plating: SN: Tin
 Color: E=Beige
 Packing: R=Tape&Reel



1.25±0.10
 A±0.20
 0.20±0.05



Pins	Dimensions		Pins	Dimensions	
	A	B		A	B
2P	1.25	5.75	9P	10.00	14.50
3P	2.50	7.00	10P	11.25	15.75
4P	3.75	8.25	11P	12.50	17.00
5P	5.00	9.50	12P	13.75	18.25
6P	6.25	10.75	13P	15.00	19.50
7P	7.50	12.00	14P	16.25	20.75
8P	8.75	13.25	15P	17.50	22.00



Tel: +86 769 82581808 FAX: +86 769 81766192
 E-Mail: sales@winpin.net Http: www.winpin.net

PART NO: W12506-1XXMXXXX1

TITLE: GH 1.25 Wafer 180° SMT type

NOTES:
 Current Rating: 1.0AMP
 Withstand Voltage: 500V AC/DC
 Contact Resistance: 30mΩ Max
 Insulation Resistance: 100MΩ Min
 Operation Temperature: -25°C to +85°C
 Applicable Terminal: T12506-PXX1
 Applicable Housing: H12506-1XXX1

Material:
 Contact Material: Phosphor Bronze
 Contact Plating: Sn over Ni
 Solder Tabs: Phosphor Bronze
 Insulator Material: PA9T(UL94V-0)

UNLESS OTHERWISE SPECIFIED DIMENSIONS ARE IN METRIC
 TOLERANCES ARE:
 DECIMALS Angle
 X.X: ±0.40 ± 3°
 X.XX: ±0.25
 X.XXX: ±0.15

SCALE	1:1
UNIT	MM
PROJ.	
SHEET	

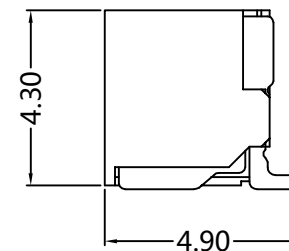
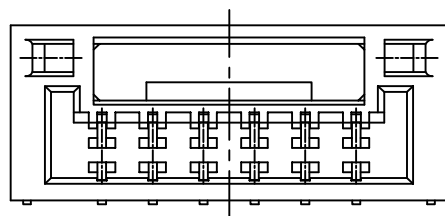
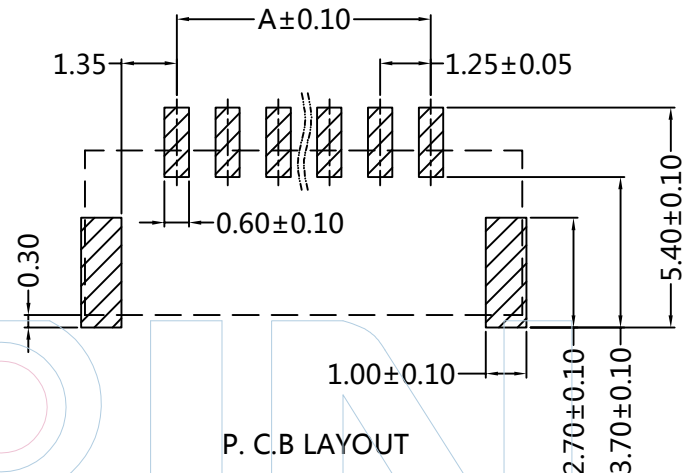
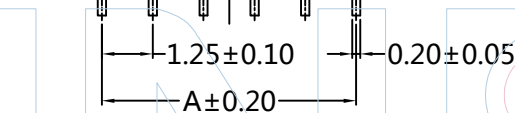
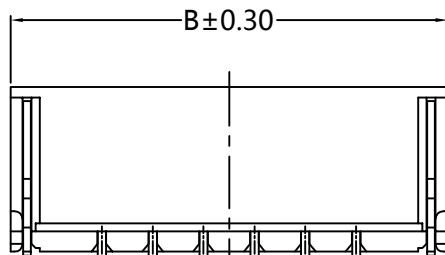
A0	2021/04/19	NEW	Andy		Andy
REV	DATE	MODIFICATION DESCRIPTION	DRAW	CHANGE	APPROVE



PART NUMBER CODING

W12506-1 XX Z XX X X 1

No.of pins: 02-15P
 Contact plating: SN: Tin
 Color: E=Beige
 Packing: R=Tape&Reel



Pins	Dimensions		Pins	Dimensions	
	A	B		A	B
2P	1.25	5.75	9P	10.00	14.50
3P	2.50	7.00	10P	11.25	15.75
4P	3.75	8.25	11P	12.50	17.00
5P	5.00	9.50	12P	13.75	18.25
6P	6.25	10.75	13P	15.00	19.50
7P	7.50	12.00	14P	16.25	20.75
8P	8.75	13.25	15P	17.50	22.00



Tel: +86 769 82581808 FAX: +86 769 81766192
 E-Mail: sales@winpin.net Http: www.winpin.net

PART NO: W12506-1XXZXXXX1

TITLE: GH 1.25 Wafer 5PIN 90° SMT type

NOTES:
 Current Rating: 1.0AMP
 Withstand Voltage: 500V AC/DC
 Contact Resistance: 30mΩ Max
 Insulation Resistance: 100MΩ Min
 Operation Temperature: -25°C to +85°C
 Applicable Terminal: T12506-PXX1
 Applicable Housing: H12506-1XXX1

Material:
 Contact Material: Phosphor Bronze
 Contact Plating: Gold Plating
 Solder Tabs: Phosphor Bronze
 Insulator Material: PA9T(UL94V-0)

UNLESS OTHERWISE SPECIFIED DIMENSIONS ARE IN METRIC TOLERANCES ARE:

DECIMALS	Angle
X.X: ±0.40	± 3°
X.XX: ±0.25	
X.XXX: ±0.15	
SCALE	1:1
UNIT	MM
PROJ.	
SHEET	

A0	2021/04/19	NEW	Andy		Andy
REV	DATE	MODIFICATION DESCRIPTION	DRAW	CHANGE	APPROVE