

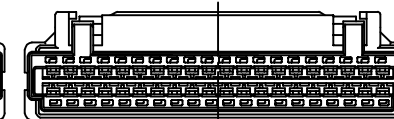
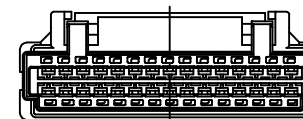
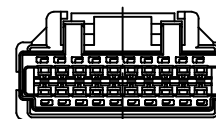
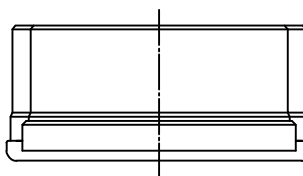
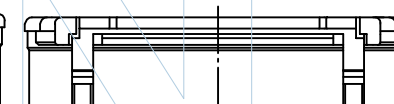
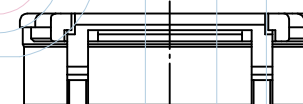
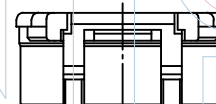
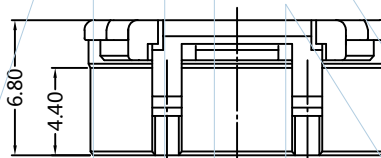
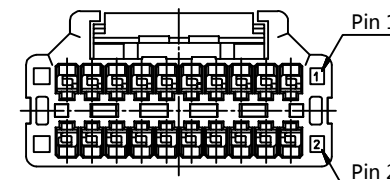
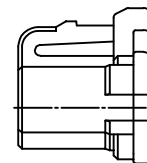
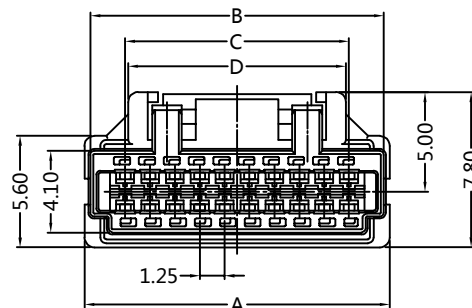


### PART NUMBER CODING

## H12510-2 XX X 1

No. of pins  
10P  
15P  
20P

Color  
W=White  
E=Beige



20Pin

30Pin

40Pin

| Poles | Dimensions (mm) |       |       |       |
|-------|-----------------|-------|-------|-------|
|       | A               | B     | C     | D     |
| 2x10P | 15.35           | 14.75 | 11.25 | 10.95 |
| 2x15P | 21.60           | 21.00 | 17.50 | 17.20 |
| 2x20P | 27.85           | 27.25 | 23.75 | 23.45 |



Tel: +86 769 82581808 FAX: +86 769 81766192  
E-Mail: sales@winpin.net Http: www.winpin.net

PART NO: H12510-2XXX1

TITLE: 1.25mm Crimp Style connectors Housing

NOTES:  
Voltage Rating:150V AC/DC  
Current Rating:1.0A AC/DC  
Withstand Voltage:500V AC/minute  
Contact Resistance:20mΩ Max  
Insulation Resistance:500MΩ Min  
Operation Temperature:-25°C to +85°C  
After environmental testing:30MΩ Max  
Suitable Terminal:T12510-PXX1

Material:  
Insulator Material:PBT(UL94V-0)

UNLESS OTHERWISE SPECIFIED DIMENSIONS ARE IN METRIC  
TOLERANCES ARE:  
DECIMALS Angle  
X.X:±0.40 ± 3°  
X.XX:±0.25  
X.XXX:±0.15

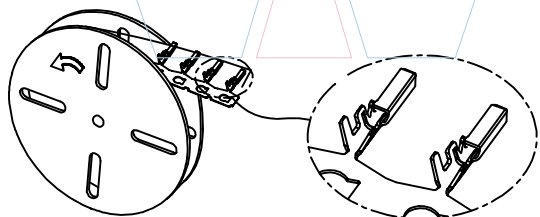
|       |     |
|-------|-----|
| SCALE | 1:1 |
| UNIT  | MM  |
| PROJ. |     |
| SHEET |     |

|     |            |                          |       |        |         |
|-----|------------|--------------------------|-------|--------|---------|
| A0  | 2021/07/21 | NEW                      | GF.He | Andy   |         |
| REV | DATE       | MODIFICATION DESCRIPTION | DRAW  | CHANGE | APPROVE |



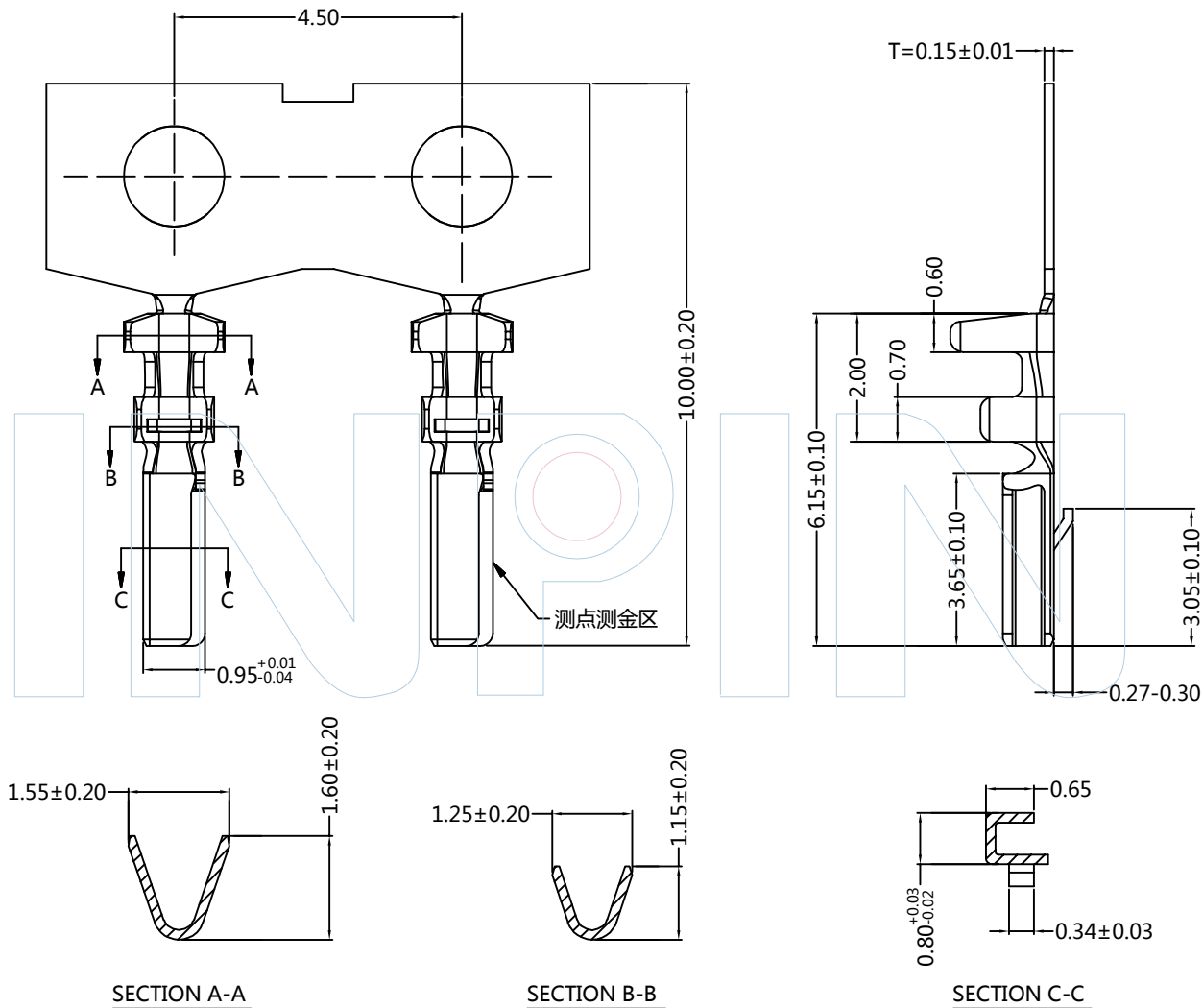
PART NUMBER CODING  
T12510-P XX 1

Contact plating  
S0:Gold Flash/Tin  
S1:3U"Gold/Tin



端子收料方向

SCALE 4:1



Tel: +86 769 82581808  
E-Mail: sales@winpin.net

FAX: +86 769 81766192  
Http: www.winpin.net

PART NO: T12510-PXX1

TITLE: 1.25mm Crimp Style connectors Terminal

NOTES:  
Voltage Rating:200V AC/DC  
Current Rating:1.5A AC/DC  
Withstand Voltage:1000V AC/minute  
Contact Resistance:20mΩ Max  
Insulation Resistance:1000MΩ Min  
Operation Temperature:-40°C to +130°C  
After environmental testing:40MΩ Max  
Wire Range:AWG26-28#  
Insulation O.D.:1.05mm Max  
Suitable Housing:H12510-2XXX1

Material:  
Contact Material:Phosphor Bronze

UNLESS OTHERWISE SPECIFIED DIMENSIONS ARE IN METRIC  
TOLERANCES ARE:  
DECIMALS Angle  
X.X:±0.40 ± 3°  
X.XX:±0.25  
X.XXX:±0.15

|       |     |
|-------|-----|
| SCALE | 1:1 |
| UNIT  | MM  |
| PROJ. |     |
| SHEET |     |

|     |            |                         |       |        |         |
|-----|------------|-------------------------|-------|--------|---------|
| A0  | 2021/07/21 | NEW                     | GF.He | Andy   |         |
| REV | DATE       | MODIFICATION DESCRIPTIO | DRAW  | CHANGE | APPROVE |



### PART NUMBER CODING

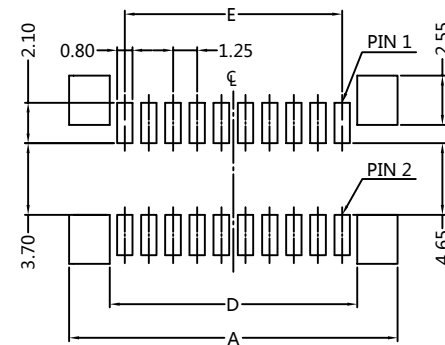
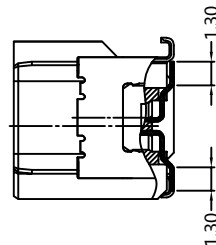
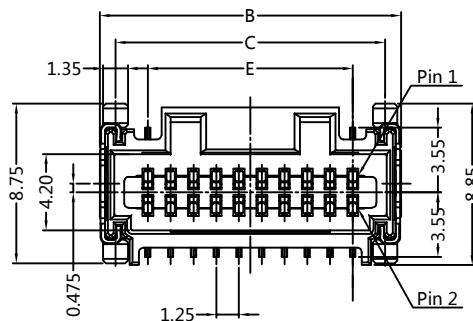
W12510-2 XX M XX X X 1

No. of pins  
10P  
15P  
20P

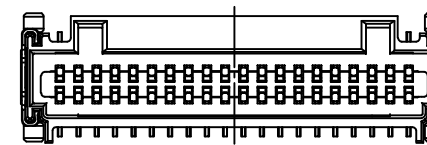
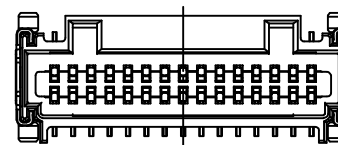
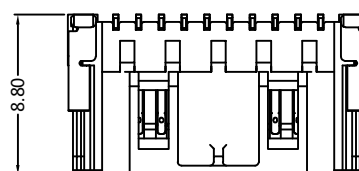
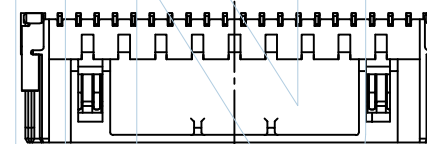
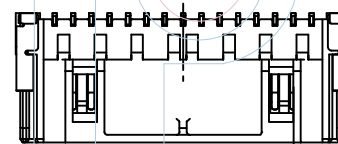
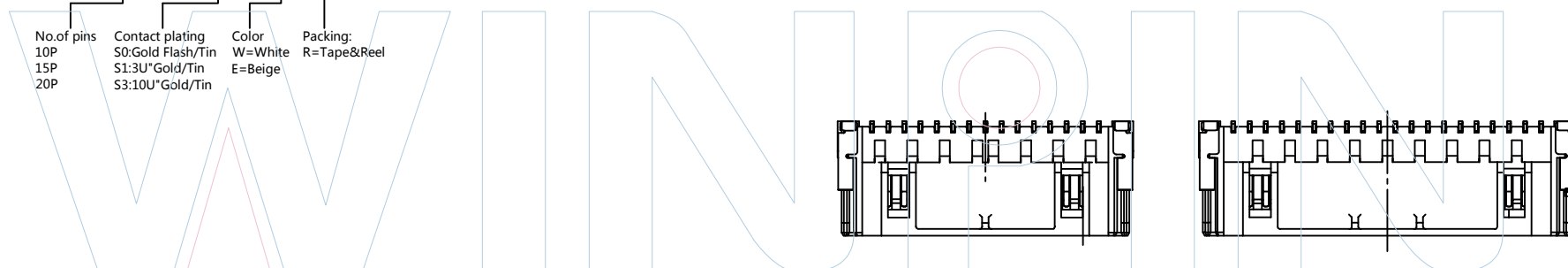
Contact plating  
S0:Gold Flash/Tin  
S1:3U"Gold/Tin  
S3:10U"Gold/Tin

Color  
W=White  
E=Beige

Packing:  
R=Tape&Reel



Recommended P.C.B Layout (Top Side)  
(PCB BOARD TOLFRANCF±0.05)



| Poles | Dimensions (mm) |       |       |       |       |       |
|-------|-----------------|-------|-------|-------|-------|-------|
|       | A               | B     | C     | D     | E     | F     |
| 2x10P | 17.00           | 16.55 | 14.80 | 12.80 | 11.25 | 4.50  |
| 2x15P | 23.25           | 22.80 | 21.05 | 19.50 | 17.50 | 10.75 |
| 2x20P | 29.50           | 29.05 | 27.30 | 25.30 | 23.75 | 17.00 |



Tel: +86 769 82581808 FAX: +86 769 81766192  
E-Mail: sales@winpin.net Http: www.winpin.net

PART NO: W12510-2XXMXXXX1

TITLE: 1.25mm Crimp Style connectors

NOTES:  
Voltage Rating:150V AC/DC  
Current Rating:1.0AMP  
Withstand Voltage:500V AC/DC  
Contact Resistance:20mΩ Max  
Insulation Resistance:500MΩ Min  
Operation Temperature:-25°C to +85°C  
After environmental testing:30MΩ Max  
Applicable Terminal:T12510-PXX1  
Applicable Housing:H12510-2XXXX1

Material:  
Contact Material:Brass  
Contact Plating:Gold/Tin  
Insulator Material:PA9T(UL94V-0)

UNLESS OTHERWISE SPECIFIED DIMENSIONS ARE IN METRIC  
TOLERANCES ARE:  
DECIMALS Angle  
X.X:±0.40 ± 3°  
X.XX:±0.25  
X.XXX:±0.15

|       |     |
|-------|-----|
| SCALE | 1:1 |
| UNIT  | MM  |
| PROJ. |     |
| SHEET |     |

|     |            |                         |       |        |         |
|-----|------------|-------------------------|-------|--------|---------|
| A0  | 2021/07/21 | NEW                     | GF.He | Andy   |         |
| REV | DATE       | MODIFICATION DESCRIPTIO | DRAW  | CHANGE | APPROVE |