

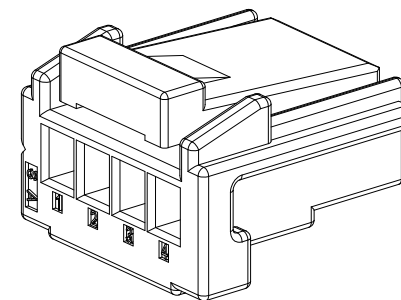
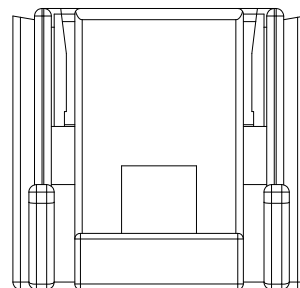


PART NUMBER CODING

H15012-1 XX X 1

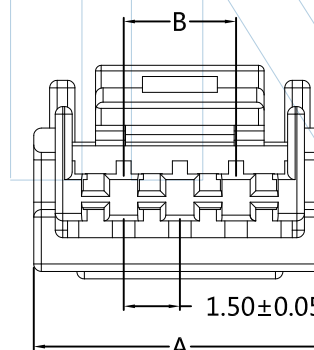
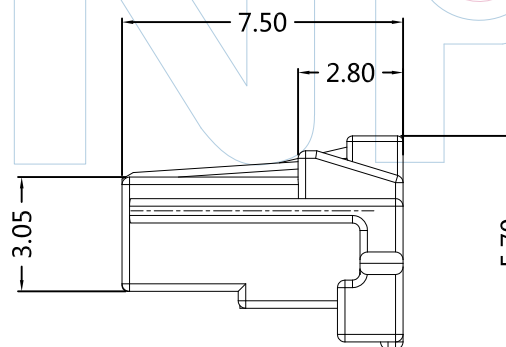
No. of pins
02~16P

Color
E=Beige



3D View

Pins	Dimensions(mm)	
	A	B
02	5.00	1.50
03	6.30	3.00
04	7.80	4.50
05	9.30	6.00
06	10.80	7.50
07	12.30	9.00
08	13.80	10.50
09	15.30	12.00
10	16.80	13.50
11	18.30	15.00
12	19.80	16.50
13	21.30	18.00
14	22.80	19.50
15	24.30	21.00
16	25.80	22.50



WINPIN
 Tel: +86 769 82581808 FAX: +86 769 81766192
 E-Mail: sales@winpin.net Http: www.winpin.net

PART NO: H15012-1XXX1
 TITLE: 1.50mm Male Housing

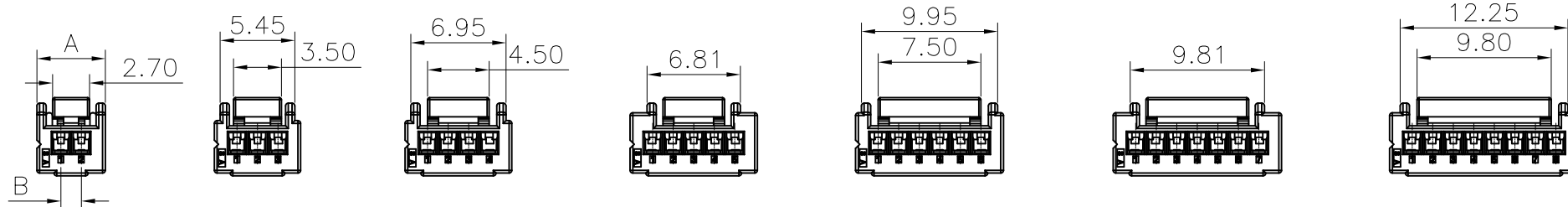
NOTES:
 Voltage Rating: 125V AC/DC
 Current Rating: 2.0A AC/DC
 Withstand Voltage: 500V AC/minute
 Contact Resistance: 20mΩ Max
 Insulation Resistance: 1000MΩ Min
 Operation Temperature: -40°C to +105°C
 Applicable Terminal: T15012-PXX1

Material:
 Insulator Material: PBT UL94V-0

UNLESS OTHERWISE SPECIFIED DIMENSIONS ARE IN METRIC TOLERANCES ARE:
 DECIMALS Angle
 X.X: ±0.40 ± 3°
 X.XX: ±0.25
 X.XXX: ±0.15

SCALE 1:1
 UNIT MM
 PROJ.
 SHEET 1/2

A0	2022/04/09	NEW	GF.He	Andy
REV	DATE	MODIFICATION DESCRIPTION	DRAW	CHANGE APPROVE



2PIN

3PIN

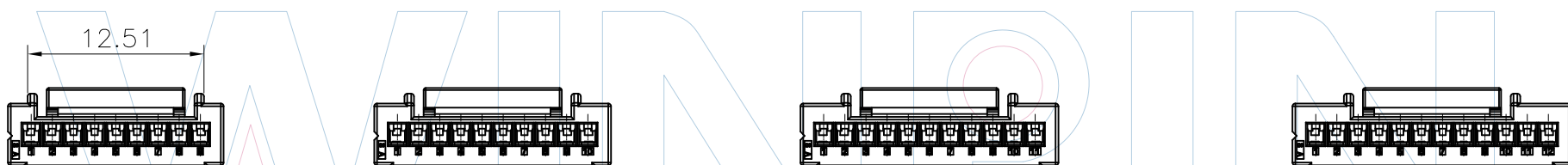
4PIN

5PIN

6PIN

7PIN

8PIN

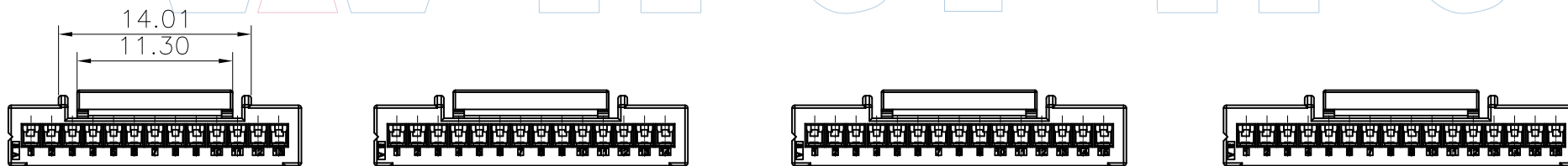


9PIN

10PIN

11PIN

12PIN



13PIN

14PIN

15PIN

16PIN



Tel: +86 769 82581808 FAX: +86 769 81766192
 E-Mail: sales@winpin.net Http: www.winpin.net

PART NO: H15012-1XXX1

TITLE: 1.50mm Male Housing

UNLESS OTHERWISE SPECIFIED DIMENSIONS ARE IN METRIC TOLERANCES ARE:
 DECIMALS Angle
 X.X: ±0.40 ± 3°
 X.XX: ±0.25
 X.XXX: ±0.15

SCALE	1:1
UNIT	MM
PROJ.	
SHEET	2/2

A0	2022/04/09	NEW	GF.He	Andy
REV	DATE	MODIFICATION DESCRIPTIO	DRAW	CHANGE APPROVE



PART NUMBER CODING

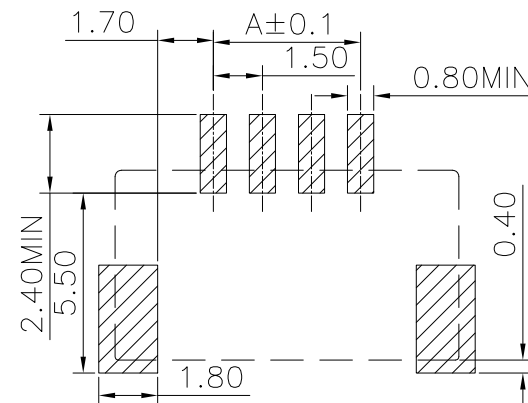
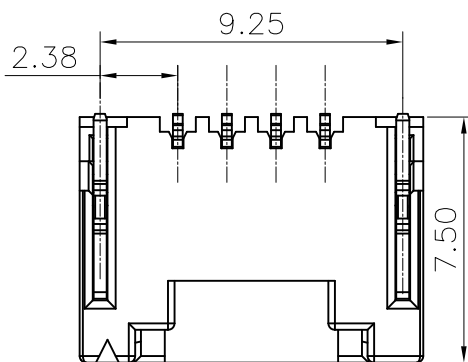
W15012-1 XX M XX X X 1

No. of pins
02-16P

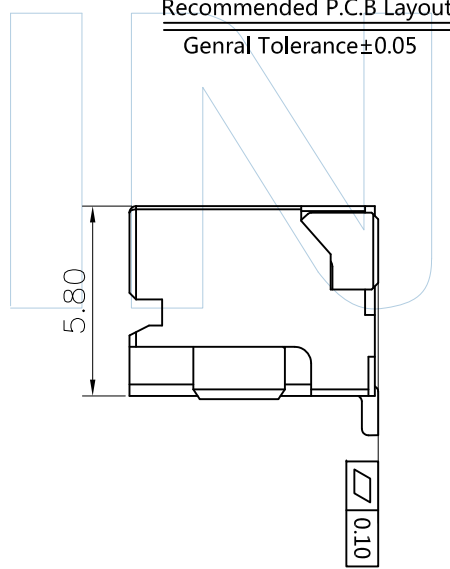
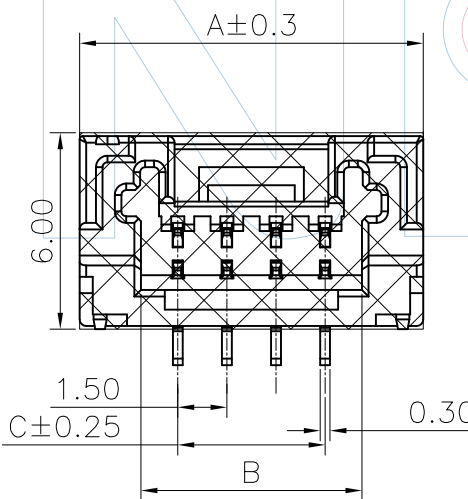
Contact plating
S0:Gold Flash/Tin
S1:3U"Gold/Tin
S2:5U"Gold/Tin
S3:10U"Gold/Tin
S4:15U"Gold/Tin
S6:30U"Gold/Tin
SN:Tin

Color
B=Black
E=Beige

Packing:
R=Reel



Recommended P.C.B Layout
General Tolerance ±0.05



Poles	Dimensions(mm)		
	A	B	C
02	7.50	3.75	1.50
03	9.00	5.25	3.00
04	10.50	6.75	4.50
05	12.00	8.25	6.00
06	13.50	9.75	7.50
07	15.00	11.25	9.00
08	16.50	12.75	10.50
09	18.00	14.25	12.00
10	19.50	15.75	13.50
11	21.00	17.25	15.00
12	22.50	18.75	16.50
13	24.00	20.25	18.00
14	25.50	21.75	19.50
15	27.00	23.25	21.00
16	28.50	24.75	22.50

WINPIN
 Tel: +86 769 82581808 FAX: +86 769 81766192
 E-Mail: sales@winpin.net Http: www.winpin.net

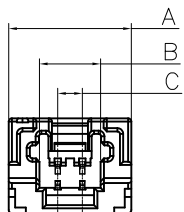
PART NO: W15012-1XXMXXX1
 TITLE: 1.50mm Wafer 180°SMT

NOTES:
 Voltage Rating:125V AC/DC
 Current Rating:2.0A AC/DC
 Withstand Voltage:500V AC/minute
 Contact Resistance:20mΩ Max
 Insulation Resistance:1000MΩ Min
 Operation Temperature:-40°C to +105°C
 Applicable Housing:H15012-1XXX1
 Applicable Terminal:T15012-PXX1

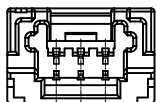
Material:
 Contact Material:Phosphor Bronze
 Contact Plating:Au or Sn over Ni
 Insulator Material:PA9T/PA6T UL94V-0

UNLESS OTHERWISE SPECIFIED DIMENSIONS ARE IN METRIC
 TOLERANCES ARE:
 DECIMALS Angle
 X.X:±0.40 ± 3°
 X.XX:±0.25
 X.XXX:±0.15
 SCALE 1:1
 UNIT MM
 PROJ.
 SHEET 1/2

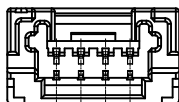
A0	2022/04/09	NEW	GF.He	Andy	
REV	DATE	MODIFICATION DESCRIPTION	DRAW	CHANGE	APPROVE



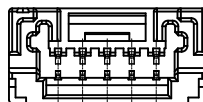
2PIN



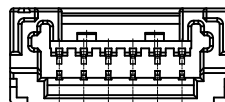
3PIN



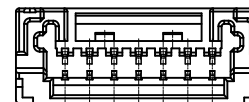
4PIN



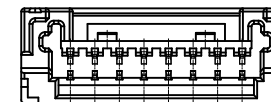
5PIN



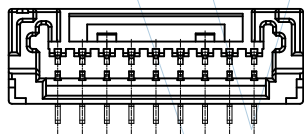
6PIN



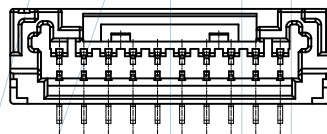
7PIN



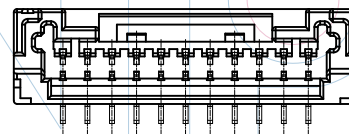
8PIN



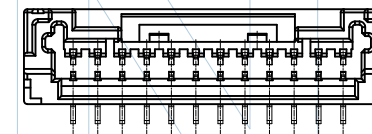
9PIN



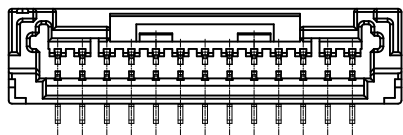
10PIN



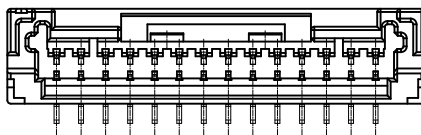
11PIN



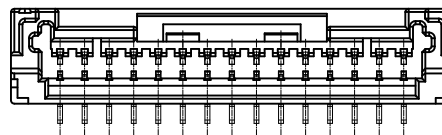
12PIN



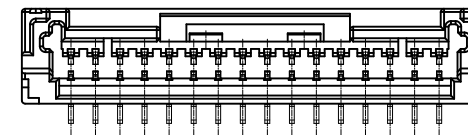
13PIN



14PIN



15PIN



16PIN

WINPIN

Tel: +86 769 82581808
E-Mail: sales@winpin.net

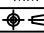
FAX: +86 769 81766192
Http: www.winpin.net

PART NO: W15012-1XXMXXX1

TITLE: 1.50mm Wafer 180°SMT

UNLESS OTHERWISE SPECIFIED DIMENSIONS ARE IN METRIC TOLERANCES ARE:

DECIMALS Angle
X.X: ±0.40 ± 3°
X.XX: ±0.25
X.XXX: ±0.15

SCALE 1:1
UNIT MM
PROJ. 
SHEET 2/2

A0	2022/04/09	NEW	GF.He	_____	Andy
REV	DATE	MODIFICATION DESCRIPTION	DRAW	CHANGE	APPROVE



PART NUMBER CODING

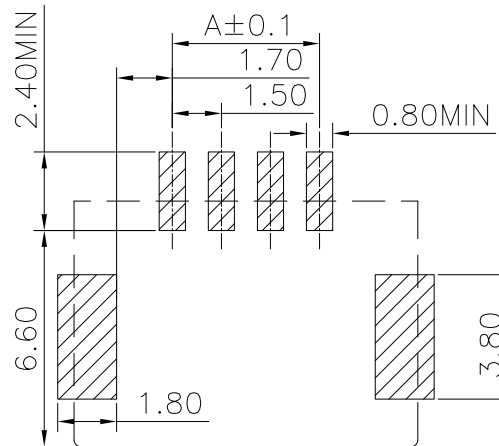
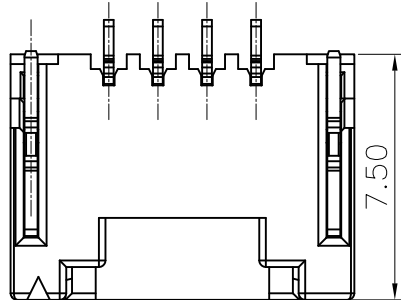
W15012-1 XX Z XX X X 1

No. of pins
02-16P

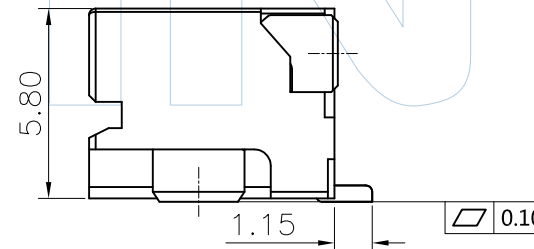
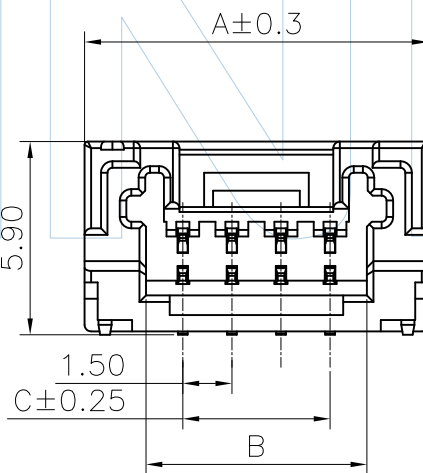
Contact plating
S0:Gold Flash/Tin
S1:3U*Gold/Tin
S2:5U*Gold/Tin
S3:10U*Gold/Tin
S4:15U*Gold/Tin
S6:30U*Gold/Tin
SN:Tin

Color
B=Black
E=Beige

Packing:
R=Reel



Recommended P.C.B Layout
General Tolerance±0.05



Poles	Dimensions(mm)		
	A	B	C
02	7.50	3.75	1.50
03	9.00	5.25	3.00
04	10.50	6.75	4.50
05	12.00	8.25	6.00
06	13.50	9.75	7.50
07	15.00	11.25	9.00
08	16.50	12.75	10.50
09	18.00	14.25	12.00
10	19.50	15.75	13.50
11	21.00	17.25	15.00
12	22.50	18.75	16.50
13	24.00	20.25	18.00
14	25.50	21.75	19.50
15	27.00	23.25	21.00
16	28.50	24.75	22.50



Tel:+86 769 82581808 FAX:+86 769 81766192
E-Mail:sales@winpin.net Http://www.winpin.net

PART NO: W15012-1XXZXXX1

TITLE: 1.50mm Wafer 90°SMT

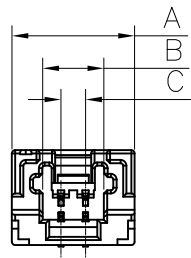
NOTES:
Voltage Rating:125V AC/DC
Current Rating:2.0A AC/DC
Withstand Voltage:500V AC/minute
Contact Resistance:20mΩ Max
Insulation Resistance:1000MΩ Min
Operation Temperature:-40°C to +105°C
Applicable Housing:H15012-1XXX1
Applicable Terminal:T15012-PXX1

Material:
Contact Material:Phosphor Bronze
Contact Plating:Au or Sn over Ni
Insulator Material:PA9T/PA6T UL94V-0

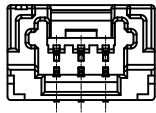
UNLESS OTHERWISE SPECIFIED DIMENSIONS ARE IN METRIC TOLERANCES ARE:
DECIMALS Angle
X.X:±0.40 ± 3°
X.XX:±0.25
X.XXX:±0.15

SCALE 1:1
UNIT MM
PROJ.
SHEET 1/2

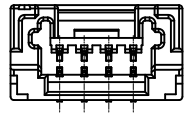
A0	2022/04/09	NEW	GF.He	Andy	
REV	DATE	MODIFICATION DESCRIPTIO	DRAW	CHANGE	APPROVE



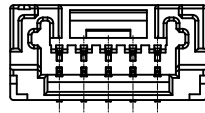
2PIN



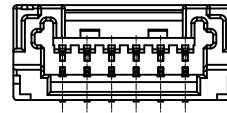
3PIN



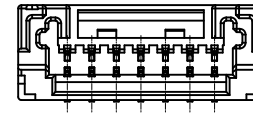
4PIN



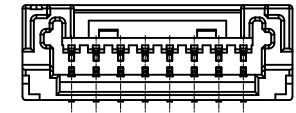
5PIN



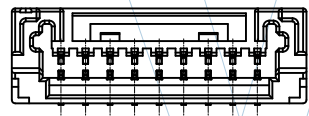
6PIN



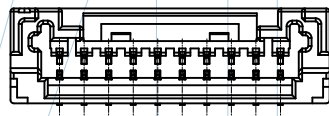
7PIN



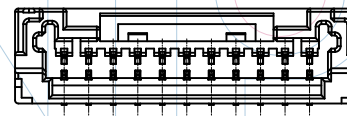
8PIN



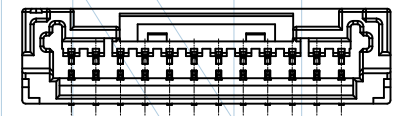
9PIN



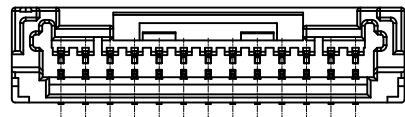
10PIN



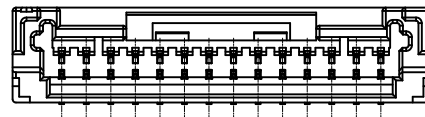
11PIN



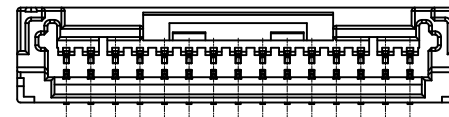
12PIN



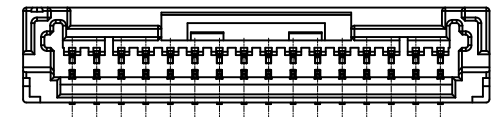
13PIN



14PIN



15PIN



16PIN

A0	2022/04/09	NEW	GF.He		Andy
REV	DATE	MODIFICATION DESCRIPTIO	DRAW	CHANGE	APPROVE