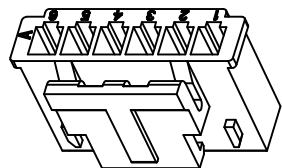
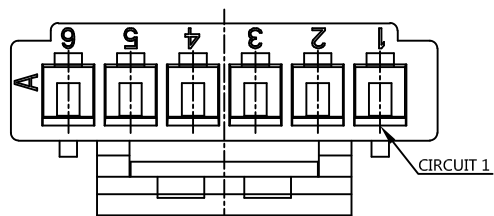




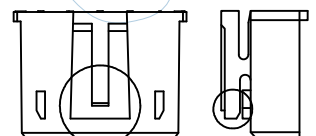
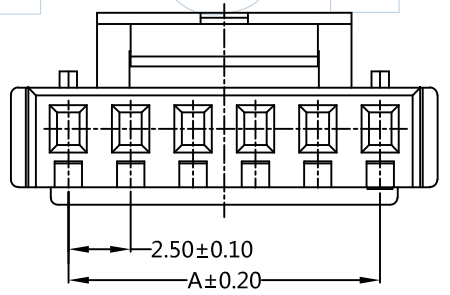
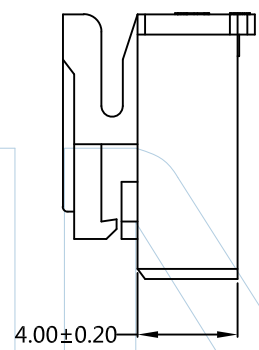
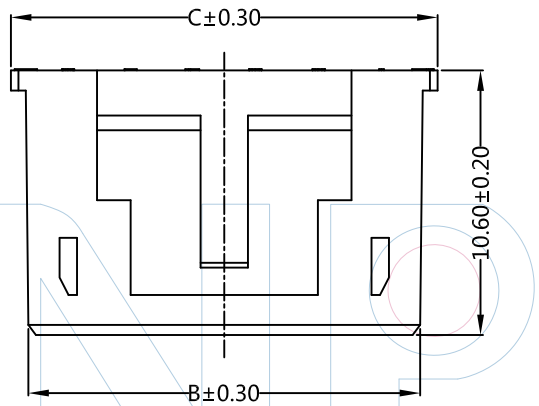
PART NUMBER CODING H25026-1 XX X 1

No. of pins
02-15P
Color
W=White

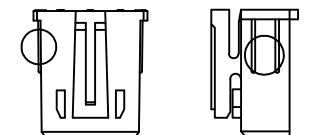
Pins	Dimensions		
	A	B	C
2P	2.50	5.70	7.10
3P	5.00	8.20	9.60
4P	7.50	10.70	12.10
5P	10.00	13.20	14.60
6P	12.50	15.70	17.10
7P	15.00	18.20	19.60
8P	17.50	20.70	22.10
9P	20.00	23.20	24.60
10P	22.50	25.70	27.10
11P	25.00	28.20	29.60
12P	27.50	30.70	32.10
13P	30.00	33.20	34.60
14P	32.50	35.70	37.10
15P	35.00	38.20	39.60



3D图示 (参考)



2/3/4/5P卡扣不同



2/3P侧面不同

WINPIN
 Tel: +86 769 82581808 FAX: +86 769 81766192
 E-Mail: sales@winpin.net Http: www.winpin.net

PART NO: H25026-1XXX1
 TITLE: 2.5mm SMH 空中接公胶壳

Note:
 Current Rating: 3A AC, DC
 Voltage Rating: 250V AC, DC
 Temperature Range: -25°C ~ +85°C
 Contact Resistance: 20mΩ Max
 Insulation Resistance: 1000mΩ Min
 Withstanding Voltage: 1000V AC/minute
 Applicable Terminal: T25026-PXX1
 Applicable Housing: H25026-1XXX2

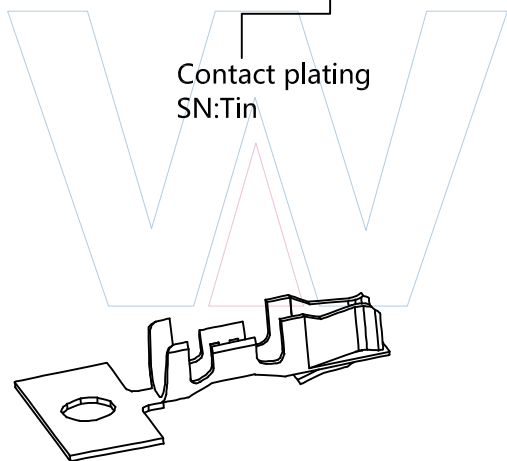
Material:
 Housing: PA66, UL94V-0

UNLESS OTHERWISE SPECIFIED DIMENSIONS ARE IN METRIC TOLERANCES ARE:
 DECIMALS Angle
 X.X: ±0.40 ± 3°
 X.XX: ±0.25
 X.XXX: ±0.15
 SCALE 1:1
 UNIT MM
 PROJ.
 SHEET

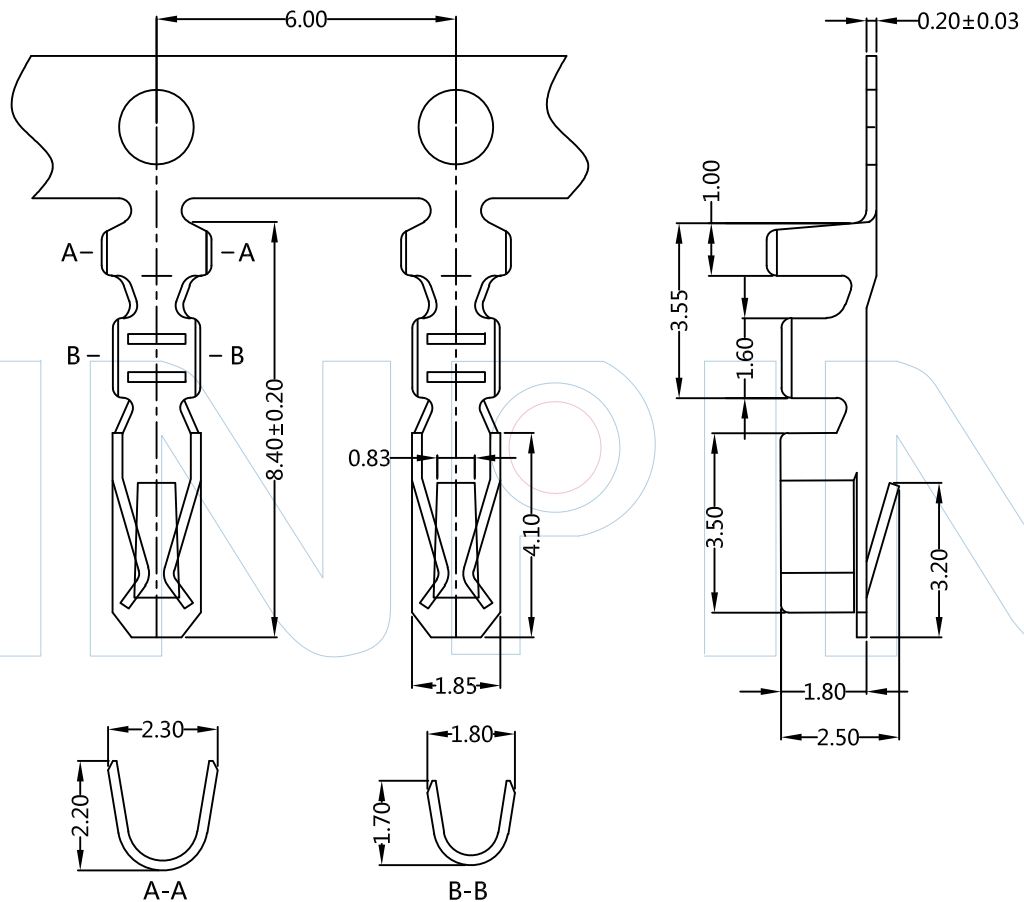
A0	2021/07/13	NEW	Andy	Andy	Bobby
REV	DATE	MODIFICATION DESCRIPTION	DRAW	CHANGE	APPROVE



PART NUMBER CODING
T25026-P XX 1



3D图示 (参考)



Tel: +86 769 82581808 FAX: +86 769 81766192
E-Mail: sales@winpin.net Http: www.winpin.net

PART NO: T25026-PXX1

TITLE: 2.5mm SMH 空中母端子

Note:
Current Rating: 3A AC, DC
Voltage Rating: 250V AC, DC
Temperature Range: -25°C ~ +85°C
Contact Resistance: 20mΩ Max
Insulation Resistance: 1000mΩ Min
Withstanding Voltage: 1000V AC/minute
Wire Range: AWG22# ~ 28#
Applicable Housing: H25026-1XXX1

Material: Phosphoric bronze
Plating: Tin-plated

UNLESS OTHERWISE SPECIFIED DIMENSIONS ARE IN METRIC TOLERANCES ARE:
DECIMALS Angle
X.X: ±0.40 ± 3°
X.XX: ±0.25
X.XXX: ±0.15

SCALE 1:1
UNIT MM
PROJ.
SHEET

A0	2021/07/13	NEW	Andy	Andy	Bobby
REV	DATE	MODIFICATION DESCRIPTION	DRAW	CHANGE	APPROVE



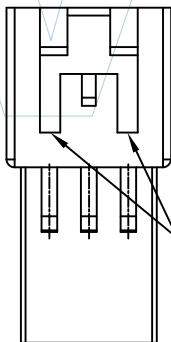
PART NUMBER CODING

H25026-1 XX X 2

No. of pins
02-15P

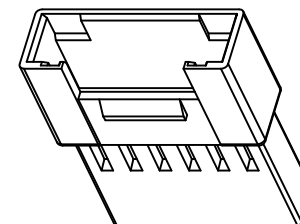
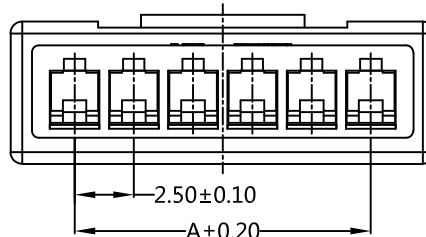
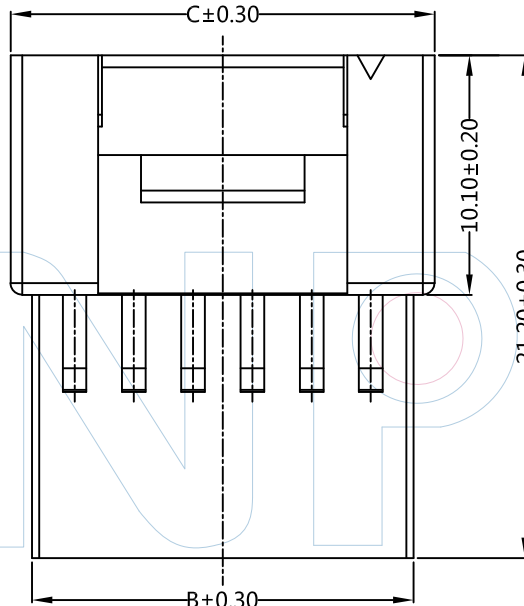
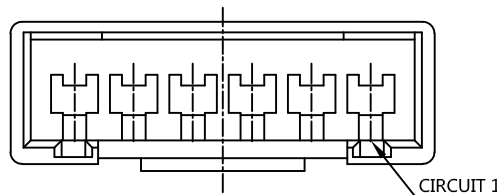
Color
W=White

Pins	Dimensions		
	A	B	C
2P	2.50	6.10	7.90
3P	5.00	8.60	10.40
4P	7.50	11.10	12.90
5P	10.00	13.60	15.40
6P	12.50	16.10	17.90
7P	15.00	18.60	20.40
8P	17.50	21.10	22.90
9P	20.00	23.60	25.40
10P	22.50	26.10	27.90
11P	25.00	28.60	30.40
12P	27.50	31.10	32.90
13P	30.00	33.60	35.40
14P	32.50	36.10	37.90
15P	35.00	38.60	40.40

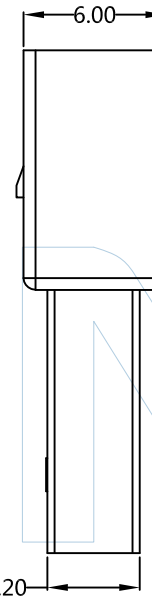


此处开口

2/3P



3D图示 (参考)



Tel: +86 769 82581808 FAX: +86 769 81766192
E-Mail: sales@winpin.net Http: www.winpin.net

PART NO: H25026-1XXX2

TITLE: 2.5mm SMP 空中接母胶壳

Note:
Current Rating: 3A AC, DC
Voltage Rating: 250V AC, DC
Insulation Resistance: 1000mΩ Min
Contact Resistance: 30mΩ Max
Withstanding Voltage: 1000V AC/minute
Operation Temperature: -25°C ~ +85°C
Applicable Terminal: T25026-PXX2
Applicable Housing: H25026-1XXX1

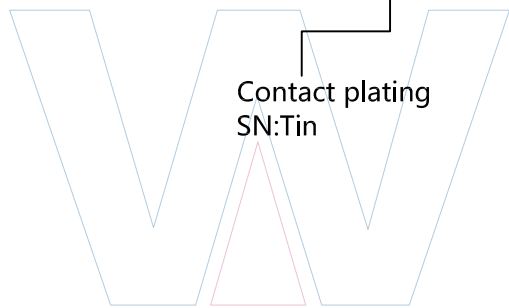
Material:
Housing: PA66, UL94V-0

UNLESS OTHERWISE SPECIFIED DIMENSIONS ARE IN METRIC TOLERANCES ARE:
DECIMALS Angle
X.X: ±0.40 ± 3°
X.XX: ±0.25
X.XXX: ±0.15

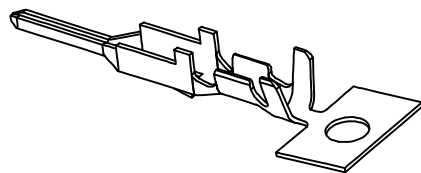
SCALE	1:1
UNIT	MM
PROJ.	
SHEET	

A0	2021/07/13	NEW	Andy	Andy	Bobby
REV	DATE	MODIFICATION DESCRIPTION	DRAW	CHANGE	APPROVE

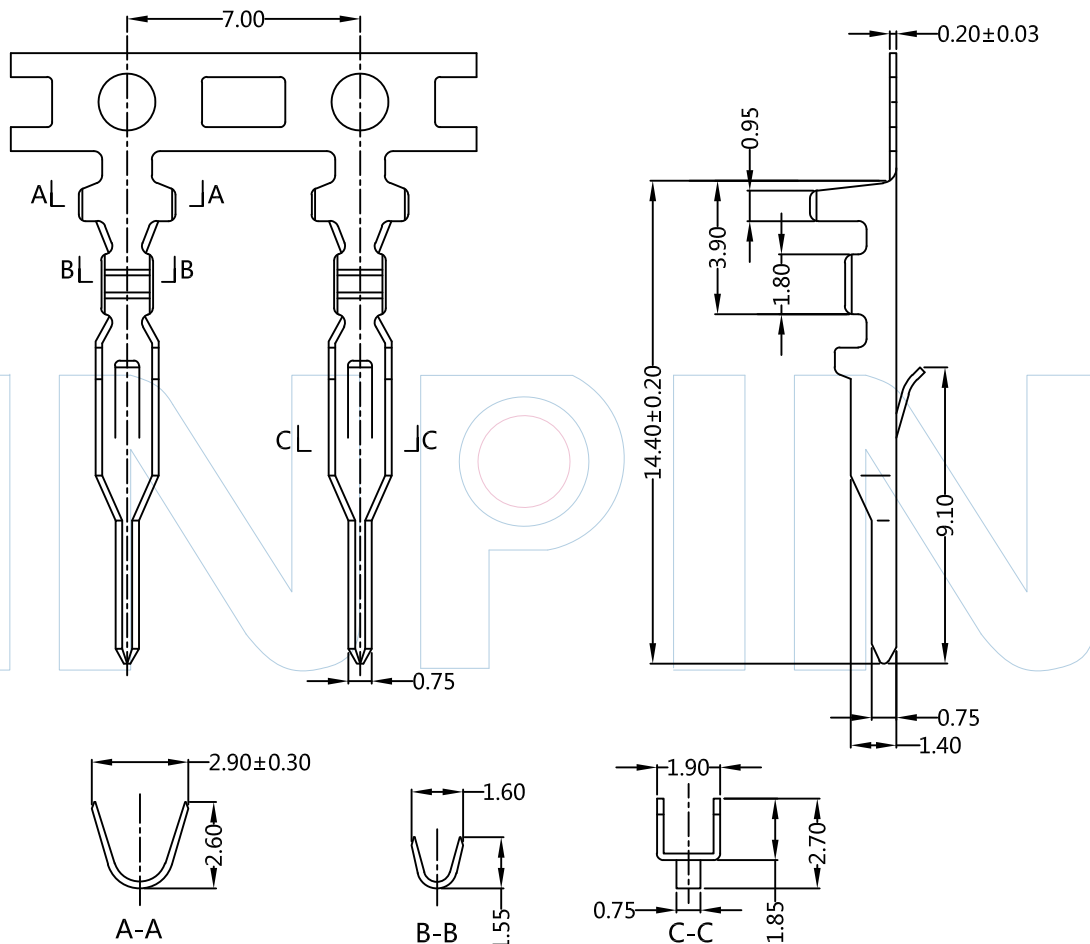
PART NUMBER CODING
T25026-P XX 2



Contact plating
SN: Tin



3D图示 (参考)



A0	2021/07/13	NEW	Andy	Andy	Bobby
REV	DATE	MODIFICATION DESCRIPTION	DRAW	CHANGE	APPROVE