

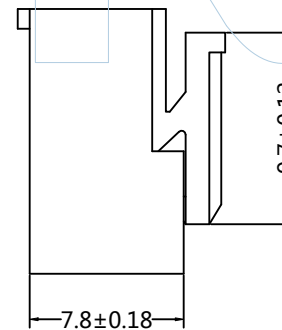
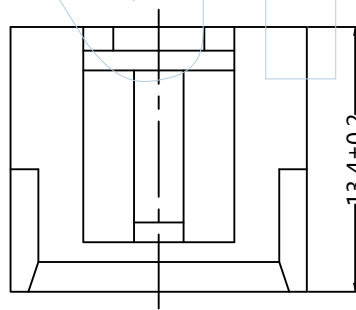
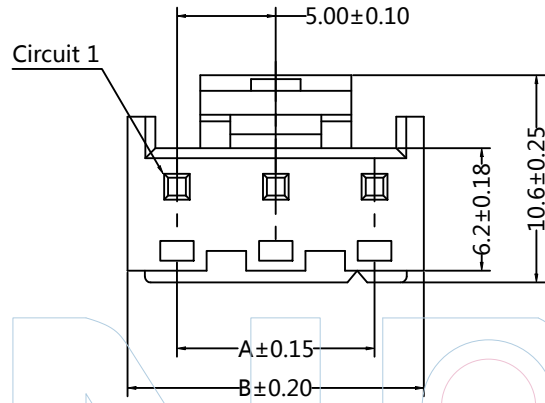
PART NUMBER CODING

H50002-1 XX X 1

No. of pins
02-10P

Color
W=White

| Pins | Dimensions | |
|------|------------|-------|
| | A | B |
| 02 | 5.00 | 10.00 |
| 03 | 10.00 | 15.00 |
| 04 | 15.00 | 20.00 |
| 05 | 20.00 | 25.00 |
| 06 | 25.00 | 30.00 |
| 07 | 30.00 | 35.00 |
| 08 | 35.00 | 40.00 |
| 09 | 40.00 | 45.00 |
| 10 | 45.00 | 50.00 |



Tel: +86 769 82581808 FAX: +86 769 81766192
E-Mail: sales@winpin.net Http: www.winpin.net

PART NO: H50002-1XXX1

TITLE: 5.00mm Housing

NOTES:
Current Rating:10AMP
Voltage Rating:250V AC/DC
Withstand Voltage:1500V AC/DC
Contact Resistance:15mΩ Max
Insulation Resistance:1000MΩ Min
Operation Temperature:-25°C to +85°C
Applicable Terminal:T50002-PXX1

MATERIAL:
Insulator Material:PA66, UL94V-2

UNLESS OTHERWISE SPECIFIED DIMENSIONS ARE IN METRIC
TOLERANCES ARE:
DECIMALS Angle
X.X:±0.40 ± 3°
X.XX:±0.25
X.XXX:±0.15

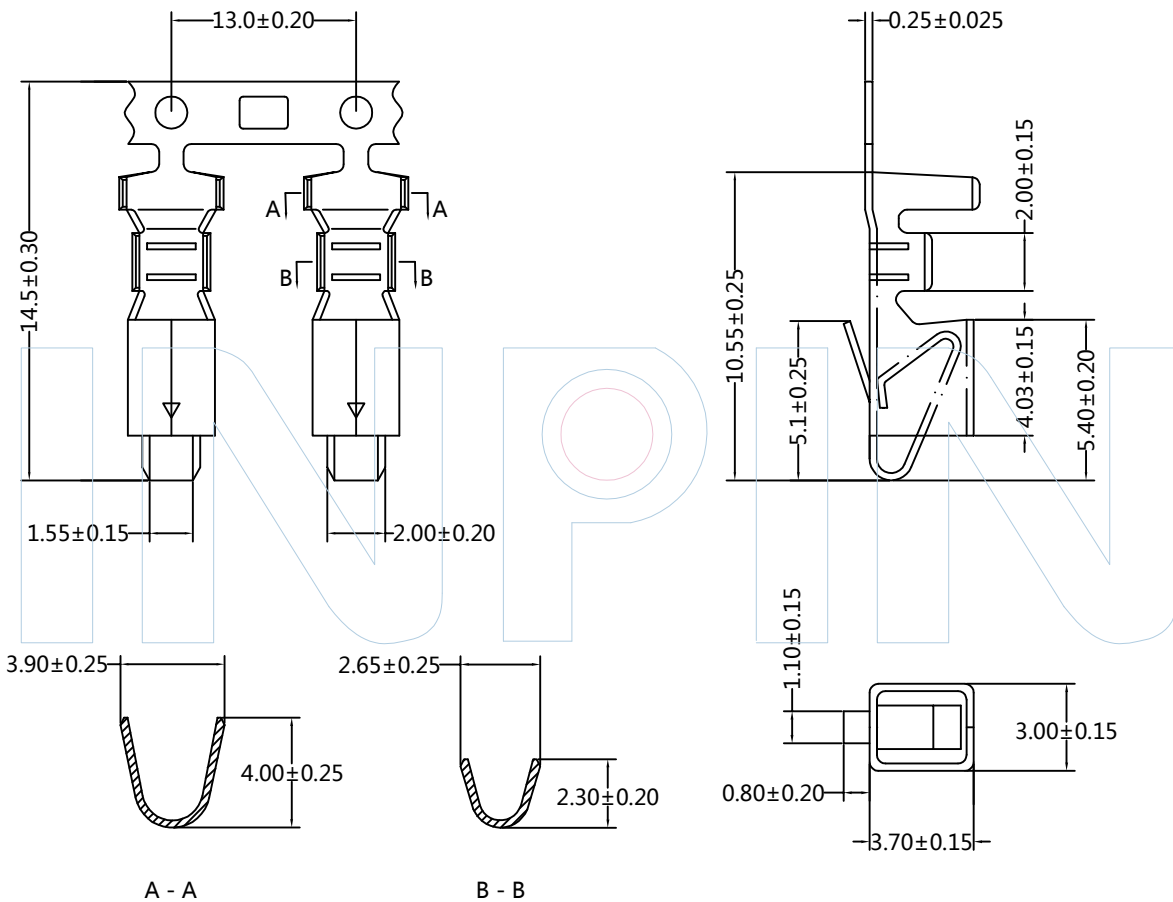
| | |
|-------|-----|
| SCALE | 1:1 |
| UNIT | MM |
| PROJ. | |
| SHEET | |

| REV | DATE | MODIFICATION DESCRIPTION | DRAW | CHANGE | APPROVE |
|-----|------------|--------------------------|-------|--------|---------|
| A0 | 2021/02/21 | NEW | GF.He | | Andy |



PART NUMBER CODING
T50002-P XX 1

Contact plating
 SN: Tin



Tel: +86 769 82581808 FAX: +86 769 81766192
 E-Mail: sales@winpin.net Http: www.winpin.net

PART NO: T50002-PXX1

TITLE: 5.00mm Terminal

NOTES:
 Current Rating: 10AMP
 Voltage Rating: 250V AC/DC
 Withstand Voltage: 1500V AC/DC
 Contact Resistance: 15mΩ Max
 Insulation Resistance: 1000MΩ Min
 Applicable Wires: AWG22~18#

MATERIAL:
 Contact Material: Phosphor Bronze
 Contact Plating: Sn over Ni

UNLESS OTHERWISE SPECIFIED DIMENSIONS ARE IN METRIC
 TOLERANCES ARE:
 DECIMALS Angle
 X.X: ±0.40 ± 3°
 X.XX: ±0.25
 X.XXX: ±0.15

SCALE 1:1
 UNIT MM
 PROJ.

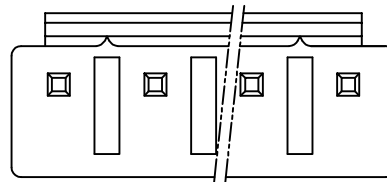
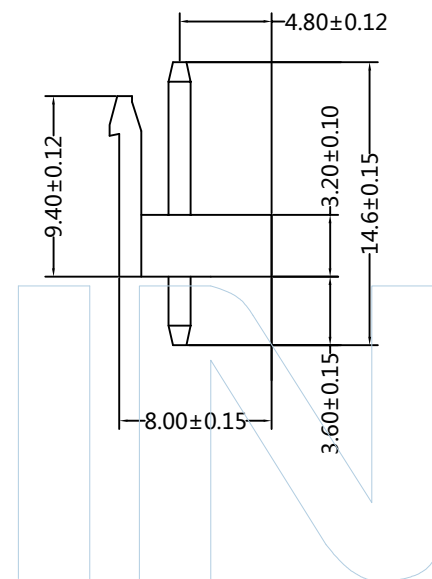
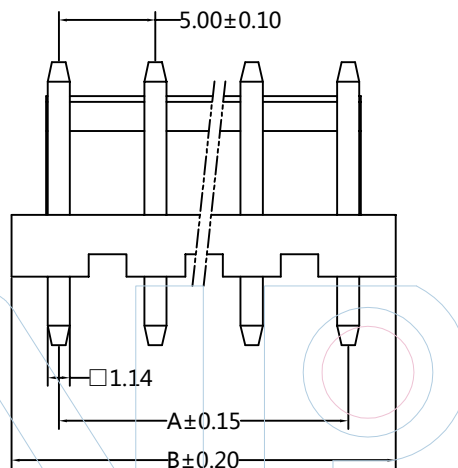
| | | | | |
|---------|------------|--------------------------|-------|--------|
| A0 | 2021/02/21 | NEW | GF.He | Andy |
| REV | DATE | MODIFICATION DESCRIPTION | DRAW | CHANGE |
| APPROVE | | | | |



PART NUMBER CODING

W50002-1 XX S XX X X 1

No. of pins: 02-10P
 Contact plating: SN: Tin
 Color: W= White
 Packing: B= PE Bag



| Pins | Dimensions | |
|------|------------|-------|
| | A | B |
| 2 | 5.00 | 10.00 |
| 3 | 10.00 | 15.00 |
| 4 | 15.00 | 20.00 |
| 5 | 20.00 | 25.00 |
| 6 | 25.00 | 30.00 |
| 7 | 30.00 | 35.00 |
| 8 | 35.00 | 40.00 |
| 9 | 40.00 | 45.00 |
| 10 | 45.00 | 50.00 |



Tel: +86 769 82581808 FAX: +86 769 81766192
 E-Mail: sales@winpin.net Http: www.winpin.net

PART NO: W50002-1XXSXXX1

TITLE: 5.00mm 180° Wafer

NOTES:
 Current Rating:10AMP
 Voltage Rating:250V AC/DC
 Withstand Voltage:1500V AC/DC
 Contact Resistance:15mΩ Max
 Insulation Resistance:1000MΩ Min
 Operation Temperature:-25°C to +85°C
 Applicable Terminal:T50002-PXX1
 Applicable Housing:H50002-1XXX1

MATERIAL:
 Contact Material:Brass
 Contact Plating:Sn over Ni
 Insulator Material:PA66, UL94V-2

UNLESS OTHERWISE SPECIFIED DIMENSIONS ARE IN METRIC
 TOLERANCES ARE:
 DECIMALS Angle
 X.X:±0.40 ± 3°
 X.XX:±0.25
 X.XXX:±0.15

| | |
|-------|-----|
| SCALE | 1:1 |
| UNIT | MM |
| PROJ. | |
| SHEET | |

| | | | | | |
|-----|------------|--------------------------|-------|--------|---------|
| A0 | 2021/02/21 | NEW | GF.He | Andy | |
| REV | DATE | MODIFICATION DESCRIPTION | DRAW | CHANGE | APPROVE |



PART NUMBER CODING

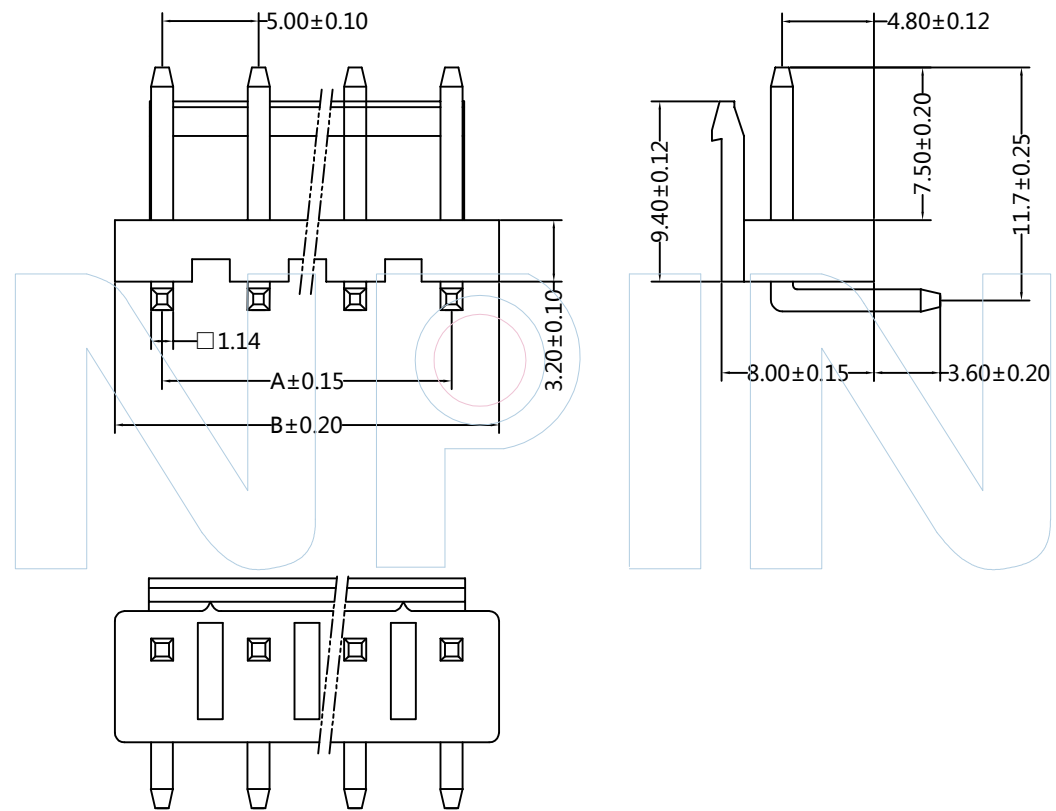
W50002-1 XX R XX X X 2

No. of pins
02~10P

Contact plating
SN: Tin

Color
W=White

Packing
B=PE Bag



| Pins | Dimensions | |
|------|------------|-------|
| | A | B |
| 2 | 5.00 | 10.00 |
| 3 | 10.00 | 15.00 |
| 4 | 15.00 | 20.00 |
| 5 | 20.00 | 25.00 |
| 6 | 25.00 | 30.00 |
| 7 | 30.00 | 35.00 |
| 8 | 35.00 | 40.00 |
| 9 | 40.00 | 45.00 |
| 10 | 45.00 | 50.00 |



Tel: +86 769 82581808 FAX: +86 769 81766192
E-Mail: sales@winpin.net Http: www.winpin.net

PART NO: W50002-1XXRXXX2

TITLE: 5.00mm 90° Wafer

NOTES:
Current Rating:10AMP
Voltage Rating:250V AC/DC
Withstand Voltage:1500V AC/DC
Contact Resistance:15mΩ Max
Insulation Resistance:1000MΩ Min
Operation Temperature:-25°C to +85°C
Applicable Terminal:T50002-PXX1
Applicable Housing:H50002-1XXX1

MATERIAL:
Contact Material:Brass
Contact Plating:Sn over Ni
Insulator Material:PA66, UL94V-2

UNLESS OTHERWISE SPECIFIED DIMENSIONS ARE IN METRIC
TOLERANCES ARE:
DECIMALS Angle
X.X:±0.40 ± 3°
X.XX:±0.25
X.XXX:±0.15

| | |
|-------|-----|
| SCALE | 1:1 |
| UNIT | MM |
| PROJ. | |
| SHEET | |

| | | | | | |
|-----|------------|-------------------------|-------|--------|---------|
| A0 | 2021/02/21 | NEW | GF.He | Andy | |
| REV | DATE | MODIFICATION DESCRIPTIO | DRAW | CHANGE | APPROVE |



PART NUMBER CODING

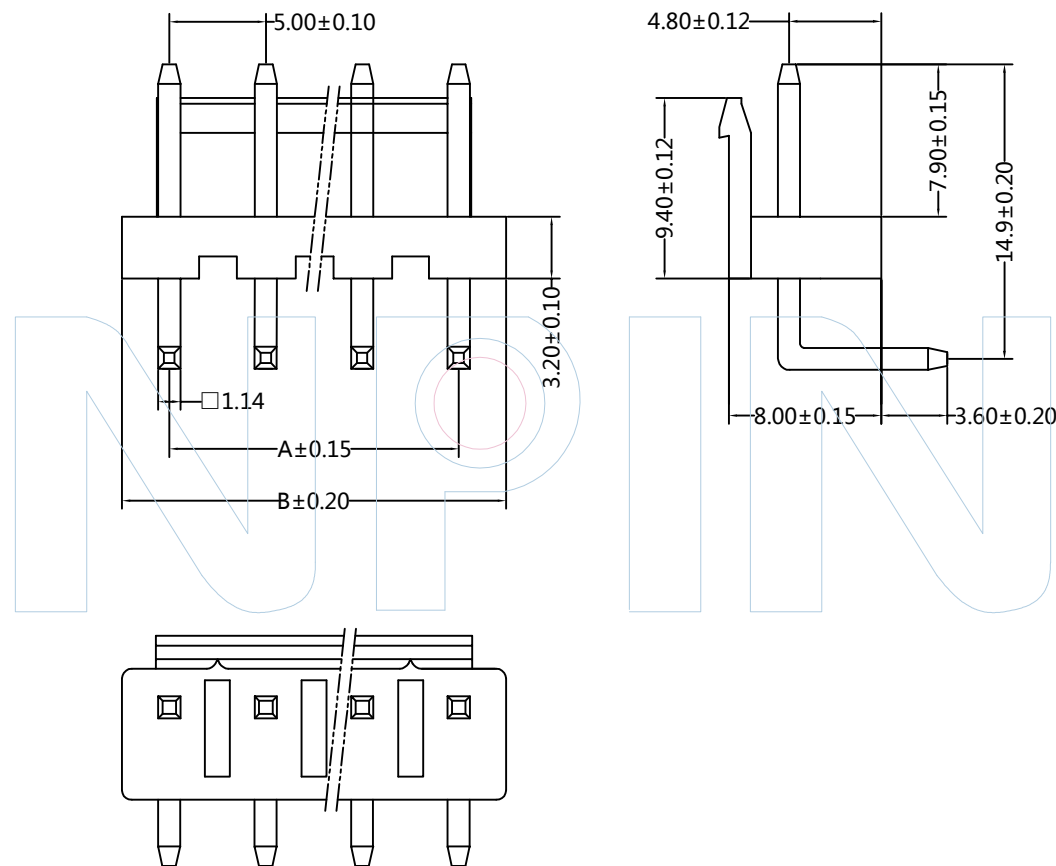
W50002-1 XX R XX X X 1

No. of pins
02~10P

Contact plating
SN: Tin

Color
W=White

Packing
B=PE Bag



| Pins | Dimensions | |
|------|------------|-------|
| | A | B |
| 2 | 5.00 | 10.00 |
| 3 | 10.00 | 15.00 |
| 4 | 15.00 | 20.00 |
| 5 | 20.00 | 25.00 |
| 6 | 25.00 | 30.00 |
| 7 | 30.00 | 35.00 |
| 8 | 35.00 | 40.00 |
| 9 | 40.00 | 45.00 |
| 10 | 45.00 | 50.00 |



Tel: +86 769 82581808 FAX: +86 769 81766192
E-Mail: sales@winpin.net Http: www.winpin.net

PART NO: W50002-1XXRXXX1

TITLE: 5.00mm 90° Wafer

NOTES:
Current Rating:10AMP
Voltage Rating:250V AC/DC
Withstand Voltage:1500V AC/DC
Contact Resistance:15mΩ Max
Insulation Resistance:1000MΩ Min
Operation Temperature:-25°C to +85°C
Applicable Terminal:T50002-PXX1
Applicable Housing:H50002-1XXX1

MATERIAL:
Contact Material:Brass
Contact Plating:Sn over Ni
Insulator Material:PA66, UL94V-2

UNLESS OTHERWISE SPECIFIED DIMENSIONS ARE IN METRIC
TOLERANCES ARE:
DECIMALS Angle
X.X:±0.40 ± 3°
X.XX:±0.25
X.XXX:±0.15

| | |
|-------|-----|
| SCALE | 1:1 |
| UNIT | MM |
| PROJ. | |
| SHEET | |

| | | | | | |
|-----|------------|-------------------------|-------|--------|---------|
| A0 | 2021/02/21 | NEW | GF.He | | Andy |
| REV | DATE | MODIFICATION DESCRIPTIO | DRAW | CHANGE | APPROVE |