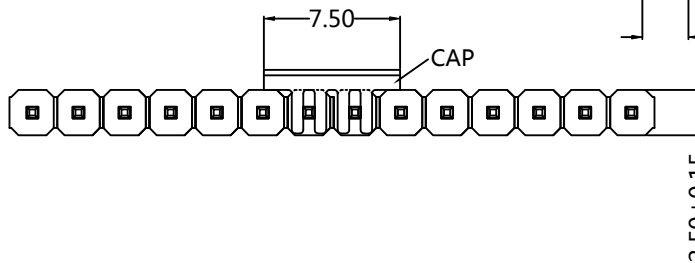
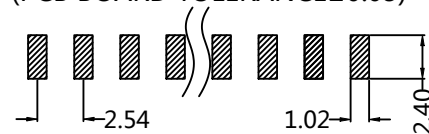


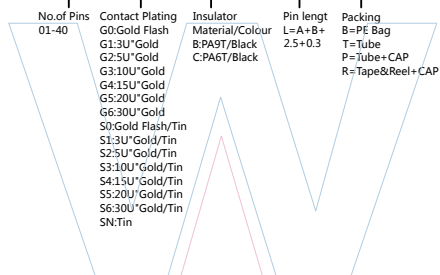


Recommended P.C.B Layout(Top Side)  
(PCB BOARD TOLERANCE±0.05)

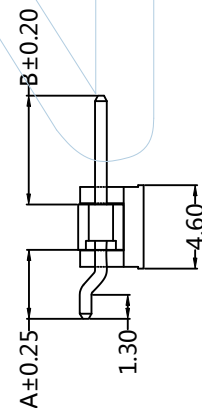
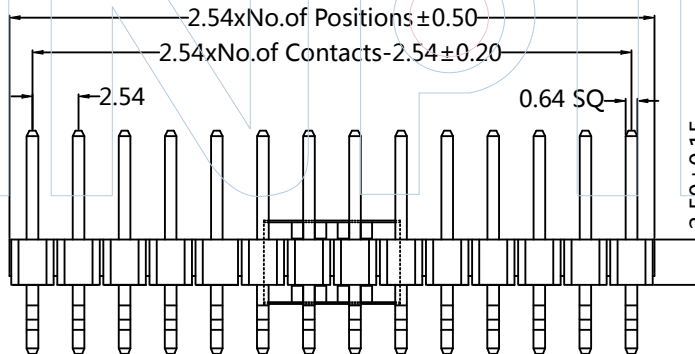


PART NUMBER CODING

PHFZ25-11 XX XX X XXX X 1



ITEM	A	B
Standard	3.80	6.00
Alternate		



Tel:+86 769 82581808 FAX:+86 769 81766192  
E-Mail:sales@winpin.net Http://www.winpin.net

PART NO: PHFZ25-11XXXXXXXXX1

TITLE: PH 2.54mm Single ROW 90°SMT H=2.5mm

NOTES:  
Current Rating:3.0AMP  
Withstand Voltage:500V AC/DC  
Contact Resistance:20mΩ Max  
Insulation Resistance:1000MΩ Min  
Operation Temperature:-40°C to +105°C

Contact Material: Brass  
Contact Plating:Au or Sn over Ni  
Insulator Material:PA6T/PA9T+30%GF (UL94V-0)

UNLESS OTHERWISE SPECIFIED DIMENSIONS ARE IN METRIC  
TOLERANCES ARE:  
DECIMALS Angle  
X.X:±0.40 ± 3°  
X.XX:±0.25  
X.XXX:±0.15

SCALE	1:1
UNIT	MM
PROJ.	
SHEET	

REV	DATE	MODIFICATION DESCRIPTIO	DRAW	CHANGE	APPROVE
A0	2015/06/25	NEW	Andy		Andy