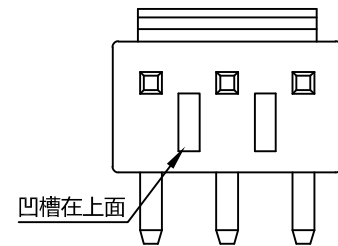
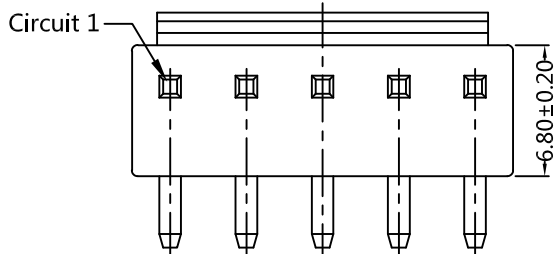




4P~15P

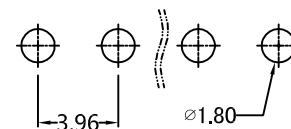
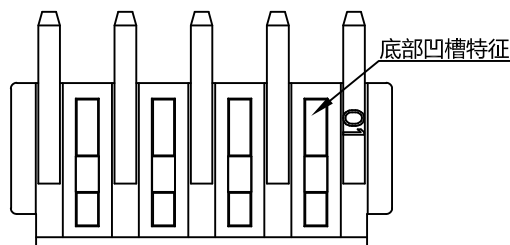
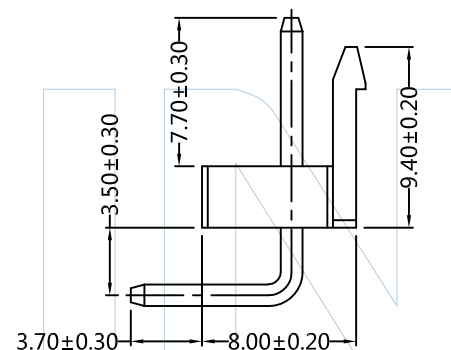
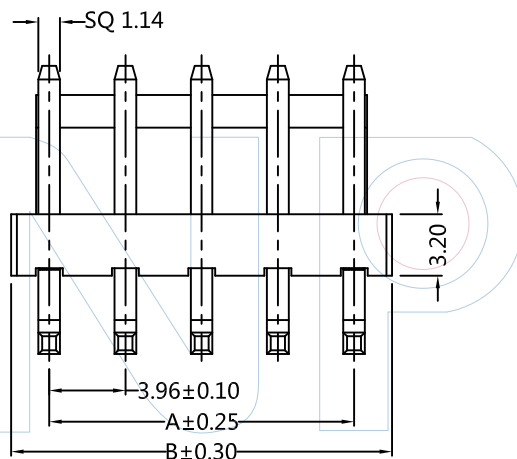
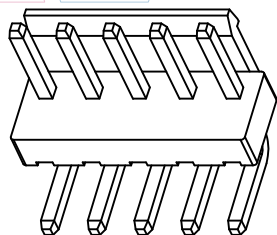
2P~3P



PART NUMBER CODING
W39603-1 XX R XX X X 1

No. of pins: 02-15P
Contact plating: SN: Tin
Color: W: White
Packing: B: PE Bag

Pins	Dimensions	
	A	B
02	3.96	7.92
03	7.92	11.88
04	11.88	15.84
05	15.84	19.80
06	19.80	23.76
07	23.76	27.72
08	27.72	31.68
09	31.68	35.64
10	35.64	39.60
11	39.60	43.56
12	43.56	47.52
13	47.52	51.48
14	51.48	55.44
15	55.44	59.40



Recommended P.C.B Layout (Top Side)
(PCB BOARD TOLERANCE ±0.05)



Tel: +86 769 82581808 FAX: +86 769 81766192
E-Mail: sales@winpin.net Http: www.winpin.net

PART NO: W39603-1XXRXXX1

TITLE: VH 3.96mm 90° Wafer 有靠背

NOTES:
Current Rating: 7.0A AC/DC
Voltage Rating: 250V AC/DC
Withstand Voltage: 1500V AC/DC
Contact Resistance: 20mΩ Max
Insulation Resistance: 1000MΩ Min
Operation Temperature: -25°C ~ +85°C
Applicable Terminal: T39603-PXX1
Applicable Housing: H39603-1XXX1

MATERIAL:
Contact: Brass
Contact Plating: Sn over Ni
Insulator: PA66, UL94V-0

UNLESS OTHERWISE SPECIFIED DIMENSIONS ARE IN METRIC
TOLERANCES ARE:
DECIMALS Angle
X.X: ±0.40 ± 3°
X.XX: ±0.25
X.XXX: ±0.15

SCALE 1:1
UNIT MM
PROJ.
SHEET

A0	2015/06/25	NEW	GF.He	Andy
REV	DATE	MODIFICATION DESCRIPTION	DRAW	CHANGE APPROVE