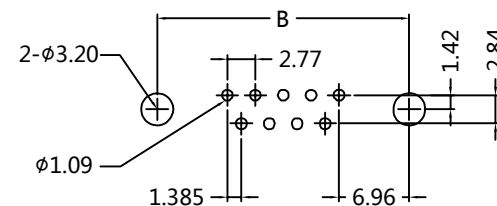


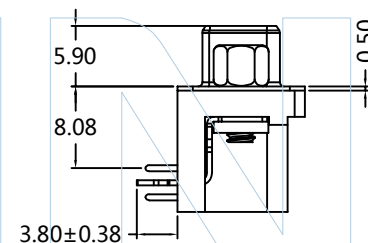
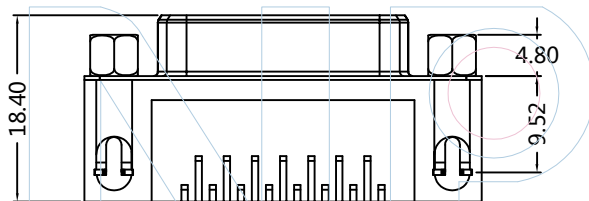
Recommended P.C.B Layout(Top Side)  
(PCB BOARD TOLERANCE±0.05)



PART NUMBER CODING

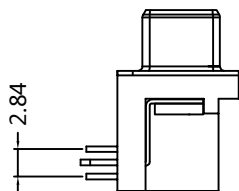
DB05F-XX XX X X A 1

- No.of Pins  
09:15:25:37P
- G0:Gold Flash  
G1:3U" Gold  
G2:5U" Gold  
G3:10U" Gold  
G4:15U" Gold  
G5:20U" Gold  
G6:30U" Gold  
S0:Gold Flash/Tin  
S1:3U" Gold/Tin  
S2:5U" Gold/Tin  
S3:10U" Gold/Tin  
S4:15U" Gold/Tin  
S5:20U" Gold/Tin  
S6:30U" Gold/Tin  
SN:Tin
- Insulator Color  
B:Black  
U:Blue  
W:White
- Type  
0=Standard  
5=With Rivet With Screw  
7=No Rivet Lock With Screw  
8=With Rivet With Screw(Don't lock)

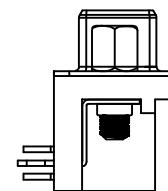


DB05F-XXXX5A1

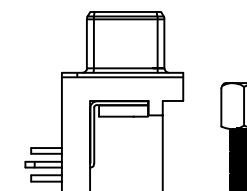
Pins	Dimensions		
	A	B	C
9P	16.30	25.00	30.80
15P	24.66	33.32	39.14
25P	38.38	47.04	53.04
37P	54.84	63.50	69.32



DB05F-XXXX0A1



DB05F-XXXX7A1



DB05F-XXXX8A1



Tel:+86 769 82581808 FAX:+86 769 81766192  
E-Mail:sales@winpin.net Http:www.winpin.net

NOTES:  
Current Rating:3.0AMP  
Withstand Voltage:500V AC/DC  
Contact Resistance:20mΩ Max  
Insulation Resistance:1000MΩ Min  
Operation Temperature:-55°C to +105°C

MATERIAL:  
Contact Material:Brass  
Contact Plating:Au or Sn Over Ni  
Sheel:Cold Roller Steel,Ni Plated  
Nut:Brass,Tin Over Ni Plated  
Insulator Material:PBT+30%GF(UL94V-0)

UNLESS OTHERWISE SPECIFIED DIMENSIONS ARE IN METRIC TOLERANCES ARE:  
DECIMALS Angle  
X.X:±0.40 ±3°  
X.XX:±0.25  
X.XXX:±0.15

PART NO:DB05F-XXXXXXA1

TITLE: D-SUB FEMALE 8.08 90°DIP

SCALE	1:1	A0	2015/06/25	NEW	Hua.ZT		Hua.ZT
UNIT	MM	REV	DATE	MODIFICATION DESCRIPTIO	DRAW	CHANGE	APPROVE
PROJ.							
SHEET							