

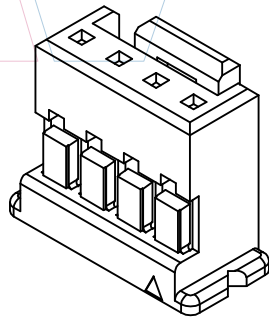


# PART NUMBER CODING

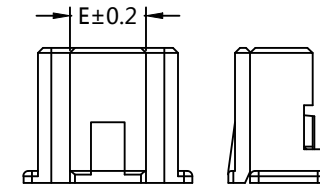
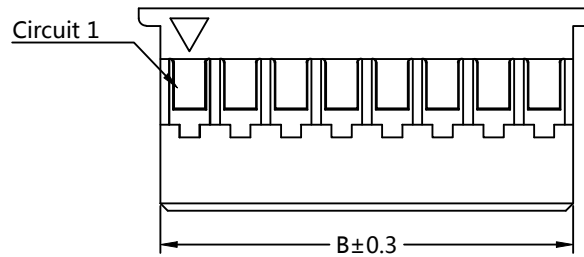
## H20013-1 XX W 1

No. of pins  
02-16P

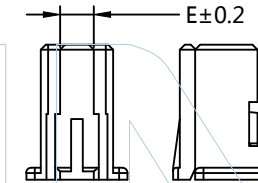
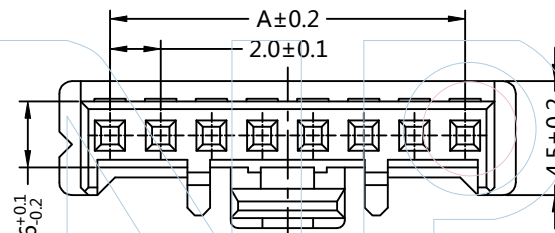
Color  
W=White



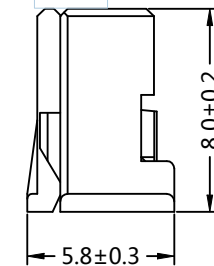
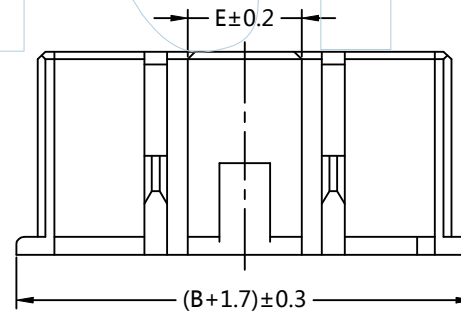
Pins	Dimensions		
	A	B	E
02P	2.00	4.30	2.00
03P	4.00	6.30	3.80
04P	6.00	8.30	4.50
05P	8.00	10.30	4.50
06P	10.00	12.30	4.50
07P	12.00	14.30	4.50
08P	14.00	16.30	4.50
09P	16.00	18.30	4.50
10P	18.00	20.30	11.00
11P	20.00	22.30	11.00
12P	22.00	24.30	11.00
13P	24.00	26.30	11.00
14P	26.00	28.30	11.00
15P	28.00	30.30	11.00
16P	30.00	32.30	11.00



3P~4P



2P



Tel: +86 769 82581808  
E-Mail: sales@winpin.net

FAX: +86 769 81766192  
Http: www.winpin.net

NOTES:  
Current Rating: 3.0AMP  
Voltage Rating: 250V AC/DC  
Withstand Voltage: 800V AC/DC  
Insulation Resistance: 1000MΩ Min  
Contact Resistance: 20mΩ Max  
Operation Temperature: -25°C ~ +85°C  
Applicable Terminal: T20013-PXX1  
Applicable Wafer: W20013-1XXXXXX1

MATERIAL:  
Insulator: PA66, UL94V-0

UNLESS OTHERWISE SPECIFIED DIMENSIONS ARE IN METRIC  
TOLERANCES ARE:  
DECIMALS Angle  
X.X: ±0.40 ± 3°  
X.XX: ±0.25  
X.XXX: ±0.15

SCALE	1:1
UNIT	MM
PROJ.	
SHEET	

A0	2015/06/25	NEW	GF.He	Andy	
REV	DATE	MODIFICATION DESCRIPTIO	DRAW	CHANGE	APPROVE

PART NO: H20013-1XXW1

TITLE: PA 2.0mm Housing